

Printed on Recycled Paper

All rights reserved by  
ZHEJIANG GENO ELECTRICAL CO.,LTD



# ELECTRICAL ACCESSORIES

DELIVER SAFETY TO THE WORLD

ZHEJIANG GENO ELECTRICAL CO., LTD.

Add:  
No.519, 15th Road, Binhai Industrial Area,  
Wenzhou, Zhejiang Province, China

Tel:  
+86 577 5661 8066  
+86 577 5587 5929  
+86 577 5661 8052

Email: [info@china-gog.com](mailto:info@china-gog.com)

[www.gog-elec.com](http://www.gog-elec.com)



FLOOR SOCKET | ELECTONIC  
WATERPROOF BOX | EXTENNTION SOCKET

# GOG electrical

ZHEJIANG GENO ELECTRICAL CO., LTD, founded in 2010, is a national high-tech enterprise focusing on household appliances and aesthetic lighting, integrating R&D, manufacturing, trade, service and other functions. The registered capital of the company is 106 million yuan, the plant construction area is more than 100,000 square meters, and more than 2,000 employees.

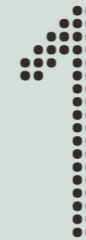
With a nationwide layout and coordinated development, Geno owns three major automation industry production bases, Wenzhou Electrical production base, Zhongshan Lighting production base and Jiaxing Integrated bath heater production base. It has many subsidiaries including **Geno Electrician, Geno Lighting, Geno Household, Geno Plastic, Geno Alloy, Geno IOT** and so on.

Main products: switch socket, lamps and lighting, Integrated bath heater, intelligent switch panel, hospital and hotel intelligent, **electrical accessories and other 50 series of more than 1000 varieties of products**, the annual sales of more than 500 million sets, products sold in more than 30 countries and regions around the world.



## HONOR

Partial



International specialized and special new small giant enterprise  
National high-tech enterprises  
Zhejiang manufacture "quality" word certification  
High performance smart electrical switch Research Institute  
Postdoctoral workstation  
Scientific and technological innovation enterprise  
President Company of Longwan Electrical Appliance Association

## QUALIFICATION

Partial



China Green Product Certification  
International laboratory accreditation Certificate - CNAS certification  
China two integration management system evaluation certificate  
ISO 90012015 Quality Management System Certification  
ISO 140012015 Environmental Management System certification  
ISO 0450012018 Occupational Health and Safety management system certification  
AAA level abided by the contract and credit enterprises

## PATENTS

Partial



Self-Resetting Wall Switch (Invention Patent)  
Surface Coating Process for Wall Switches (Invention Patent)  
Smart-Controlled Five-Socket Outlet with Induction Light (Invention Patent)  
Multi-Functional Socket with Adjustable Spacing (Invention Patent)  
Convertible Socket Holes (Invention Patent)  
Assembly Method for Contact Switch Bases (Invention Patent)  
Novel Panel (Invention Patent)  
Smart Outlet with Induction Night Light (Invention Patent)  
Thin-Type Switch Assembly (Utility Model Patent)  
Riveting Head for Hot Riveting Tools (Utility Model Patent)

# GOG electrical

## Global Open Genuine

### Mission

Deliver safety to hundreds of millions of families around the world

Create value for customers

Help employees develop, Make positive happiness for society

### Values

Customer first,  
high efficiency, innovation  
integrity, responsibility, equality

## FLOOR SOCKET

---

POP-UP FLOOR SOCKET	05-10
DUAL 86 POP-UP FLOOR SOCKET	11-12
86 FLIP TYPE SOCKET	13-14
FLAT PUSH-TYPE FLOOR SOCKET	15-16
OPEN TYPE FLOOR SOCKET	17-18
DOUBLE DOOR OPEN TYPE FLOOR SOCKET	19
MARABLE/BLANKET DECORATED FLOOR SOCKET	20
FLOOR SOCKET MODULES (HIGH VOLTAGE)	21
FLOOR SOCKET MODULES (ELECTRO-WEAK)	22-23
FLOOR SOCKET BOTTOM BOX	24

## WATERPROOF BOX

---

LUXURY WATERPROOF BOX	29-36
SELF ADHESIVE WATERPROOF BOX	37-40
OUTDOOR CHARGING PLIE WATERPROOF BOX	41-42
Ip66 OUTDOOR WATERPROOF BOX	42-44
Ip55 LEAKAGE PROTECTION WATERPROOF BOX	45-46
OUTDOOR IP55 WATERPROOF BOX	47-54
Ip66 WATERPROOF	55-56

## ELECTONIC

---

VOLTAGE PROTECTOR	59-60
ELECTRONIC PRODUCTS SERIES	61-64
TRACK SOCKET	65-68

## EXTENNTION SOCKET

---

MF STANDARD	75-76
BRITISH STANDARD	77-78
GERMAN STANDARD	79
ISSUED THE STANDARD	80
THAI STANDARD	81-82
AMERICAN STANDARD	83-84
LAMP HOLDER/SWITCH BOX	85-86

# FLOOR SOCKET SERIES




GOGelectrical



## FLOOR SOCKET

Curved design for a close fit to the floor  
Elegant and generous, with  
additional features such as water and dust resistance to ensure safe use.

-  Overall flame retardant
-  High temperature resistant
-  Imported stainless steels
-  Safe and durable
-  Tin-phosphor bronze

# POP-UP FLOOR SOCKET

ONE TYPE OF SOCKET THAT IS INSTALLED ON THE GROUND.



## SPECIFIC:

Item No	D32	Current and voltage:10A-250V
Material	Brass	
Size	120*120mm	
QTY	20 pcs/ctn	



## PRODUCT FUNCTIONS

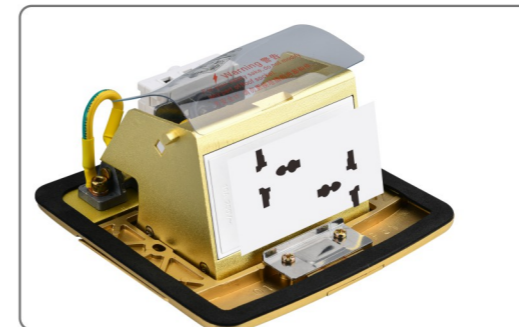
1. When the product is in use, the functional parts will be popped out of the ground, making a diagonal angle with the ground, which is convenient for insertion and pulling out the plug.
2. When the product is not in use, the functional parts can be hidden in the bottom box.

## FEATURES AND ADVANTAGES

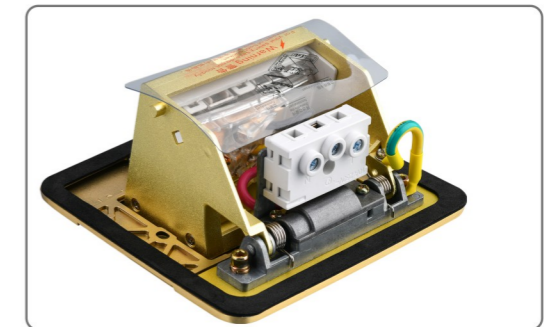
1. The product have two types: slowly pop-up type with damper and ordinary pop-up type.
2. All functional parts's size are same and can be replaced/combined freely.

## GREAT DESIGN IN DETAIL

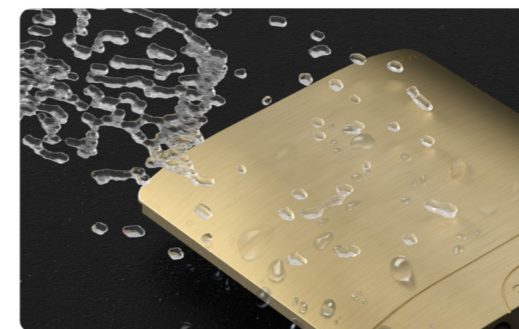
The black top cover is made of Stainless steel, rustproof, waterproof gasket with IP44 waterproof rating, UL certified, tamper-proof export, the bottom box is made of stainless steel, black paint, to play the role of antioxidant coating.



High-power module, multiple plugs use stainless steel sliding tongue, sliding tongue cover screw, Anti-rust upgrade panel adopts vibration grinding process Fine and flawless



It can be used for cable connection, soft cable and hard cable Tighter and more reliable Zinc alloy silicone damping Bold ground cable Zinc alloy supportWide border water ring



Large cover using fine technology, protection level Reach IP55, effectively prevent daily water storage Insert into the ground to ensure the safety of electricity.

- Overall flame retardant
- High temperature resistant
- Imported stainless steels
- Safe and durable
- Tin-phosphor bronze

## APPLICATION

Flooring, dining tables, marble countertops, kitchen worktops, etc.



## POP-UP FLOOR SOCKET

SPECIFIC:

Item No	D11-T
Material	Stainless steel material (brushed gold color)
Size	120*120mm
QTY	20 pcs/ctn



SPECIFIC:

Item No	D11-T
Material	Stainless steels
Size	120*120mm
QTY	20 pcs/ctn



## POP-UP FLOOR SOCKET

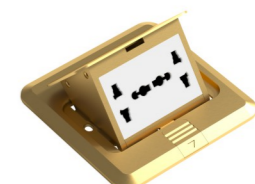
SPECIFIC:

Item No	D32
Material	Zinc alloy
Size	120*120mm
QTY	20 pcs/ctn



SPECIFIC:

Item No	D31
Material	Brass
Size	120*120mm
QTY	20 pcs/ctn



SPECIFIC:

Item No	D18
Material	Brass
Size	120*120mm
QTY	20 pcs/ctn



SPECIFIC:

Item No	D17
Material	Stainless steel material (brushed gold color)
Size	120*120mm
QTY	20 pcs/ctn



SPECIFIC:

Item No	D32
Material	Brass
Size	120*120mm
QTY	20 pcs/ctn



SPECIFIC:

Item No	C62
Material	Brass
Size	115*115mm
QTY	20 pcs/ctn



SPECIFIC:

Item No	D17
Material	Stainless steels
Size	120*120mm
QTY	20 pcs/ctn



SPECIFIC:

Item No	D11-T
Material	Wood grain
Size	120*120mm
QTY	20 pcs/ctn



SPECIFIC:

Item No	C61
Material	Brass
Size	115*115mm
QTY	20 pcs/ctn



SPECIFIC:

Item No	B50
Material	Brass
Size	120*120mm
QTY	20 pcs/ctn



SPECIFIC:

Item No	C21
Material	Stainless steels
Size	120*120mm
QTY	20 pcs/ctn



SPECIFIC:

Item No	P60
Material	Aluminum
Size	120*120mm
QTY	20 pcs/ctn



SPECIFIC:

Item No	P60
Material	Brass
Size	120*120mm
QTY	20 pcs/ctn



SPECIFIC:

Item No	B22
Material	Brass (black color)
Size	120*120mm
QTY	20 pcs/ctn




# DECORATIVE POP-UP FLOOR SOCKET

ONE TYPE OF SOCKET THAT IS INSTALLED ON THE GROUND.



## SPECIFIC:

Item No	A70	Current and voltage:10A~250V
Material	Tempered glass	
Size	120*122 mm	
QTY	20 pcs/ctn	
		

## PRODUCT FUNCTIONS

1. When the product is in use, the functional parts will be popped out of the ground, making a diagonal angle with the ground, which is convenient for insertion and pulling out the plug.
2. When the product is not in use, the functional parts can be hidden in the bottom box.

## FEATURES AND ADVANTAGES

1. The product have two types: slowly pop-up type with damper and ordinary pop-up type.
2. All functional parts's size are same and can be replaced/ combined freely.

## APPLICATION

Flooring, dining tables, marble countertops, kitchen worktops, etc.

-  Overall flame retardant
-  High temperature resistant
-  Imported stainless steels
-  Safe and durable
-  Tin-phosphor bronze

# POP-UP FLOOR SOCKET

## SPECIFIC:

Item No	A70
Material	Tempered glass
Size	120*122 mm
QTY	20 pcs/ctn



Gray



White



Gold



Black



Light blue

## GREAT DESIGN IN DETAIL



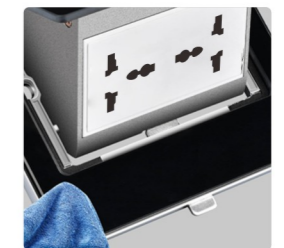
Upgrade the tempered panel  
The full coverage of the floor insert panel is made of 3.5MM thick tempered glass with high light transmission and good finish



2.5D cambered surface design, round corners refuse to stiff, make the touch upgrade.



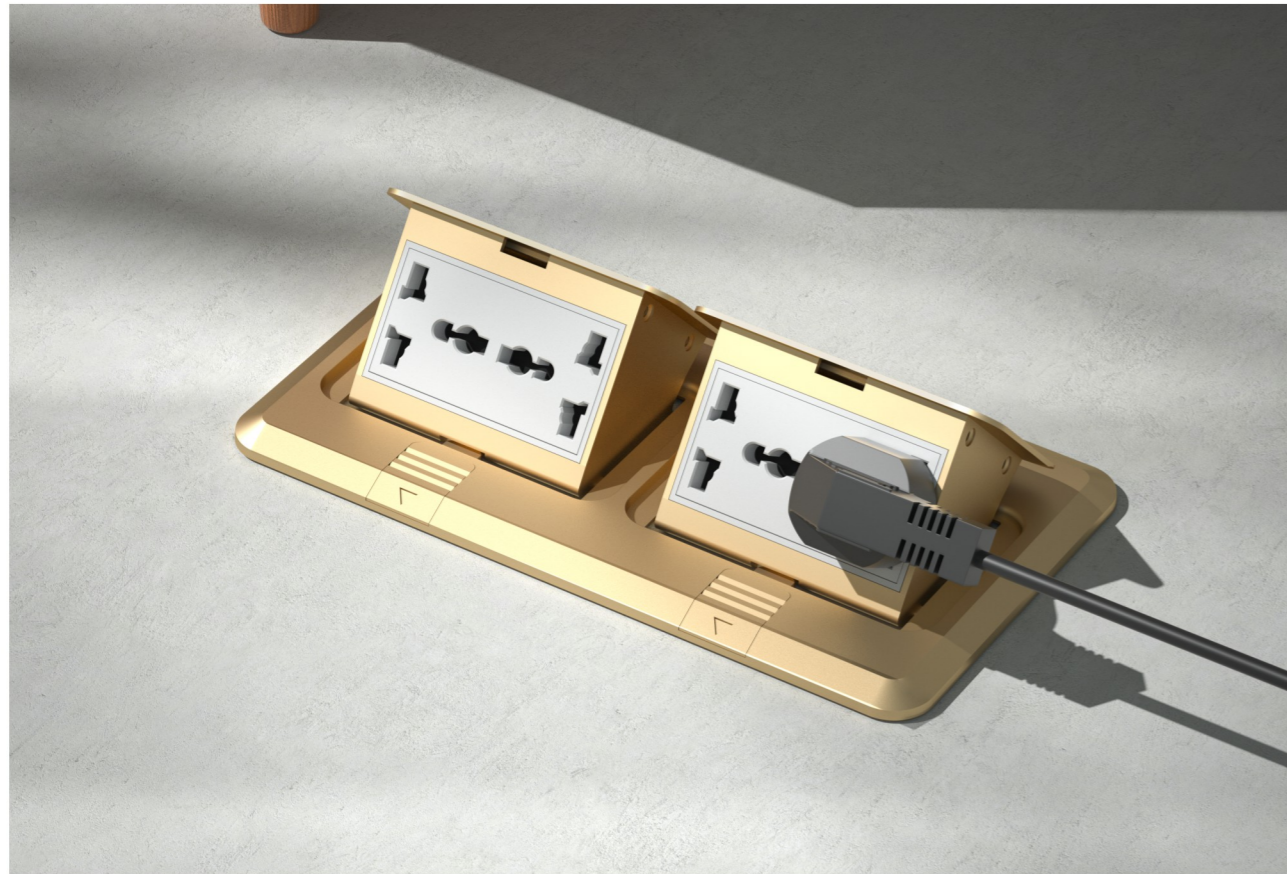
High hardness tempered glass floor socket, thickening treatment is not afraid of scratching, a few years later, bright as ever.



Smooth and clean tempered glass panel, dust is not easy to adhere, just a gentle wipe, bright and clean as new

# DUAL 86 POP-UP FLOOR SOCKET

ONE TYPE OF SOCKET THAT IS INSTALLED ON THE GROUND.



## SPECIFIC:

Item No	A66-1	Current and voltage:10A~250V
Material	Brass	
Size	221*120mm	
QTY	14 pcs/ctn	



## PRODUCT FUNCTIONS

1. When the product is in use, the functional parts will be popped out of the ground, making a diagonal angle with the ground, which is convenient for insertion and pulling out the plug.
2. When the product is not in use, the functional parts can be hidden in the bottom box.

## FEATURES AND ADVANTAGES

1. The product have two types: slowly pop-up type with damper and ordinary pop-up type.
2. All functional parts's size are same and can be replaced/combined freely.
3. The capacity of dual type floor socket is larger.

## APPLICATION

Flooring, dining tables, marble countertops, kitchen worktops, etc.

- Overall flame retardant
- High temperature resistant
- Imported stainless steels
- Safe and durable
- Tin-phosphor bronze

# DUAL 86 POP-UP FLOOR SOCKET

## SPECIFIC:

Item No	A45
Material	Aluminium alloy
Size	143*120mm
QTY	20 pcs/ctn



## SPECIFIC:

Item No	A45
Material	Brass
Size	143*120mm
QTY	20 pcs/ctn



## SPECIFIC:

Item No	A66-1
Material	Brass
Size	221*120mm
QTY	14 pcs/ctn



## SPECIFIC:

Item No	A66-2
Material	Brass
Size	221*120mm
QTY	14 pcs/ctn



## SPECIFIC:

Item No	A66-1
Material	Aluminium alloy
Size	221*120mm
QTY	14 pcs/ctn



## SPECIFIC:

Item No	A66-2
Material	Aluminium alloy
Size	221*120mm
QTY	14 pcs/ctn



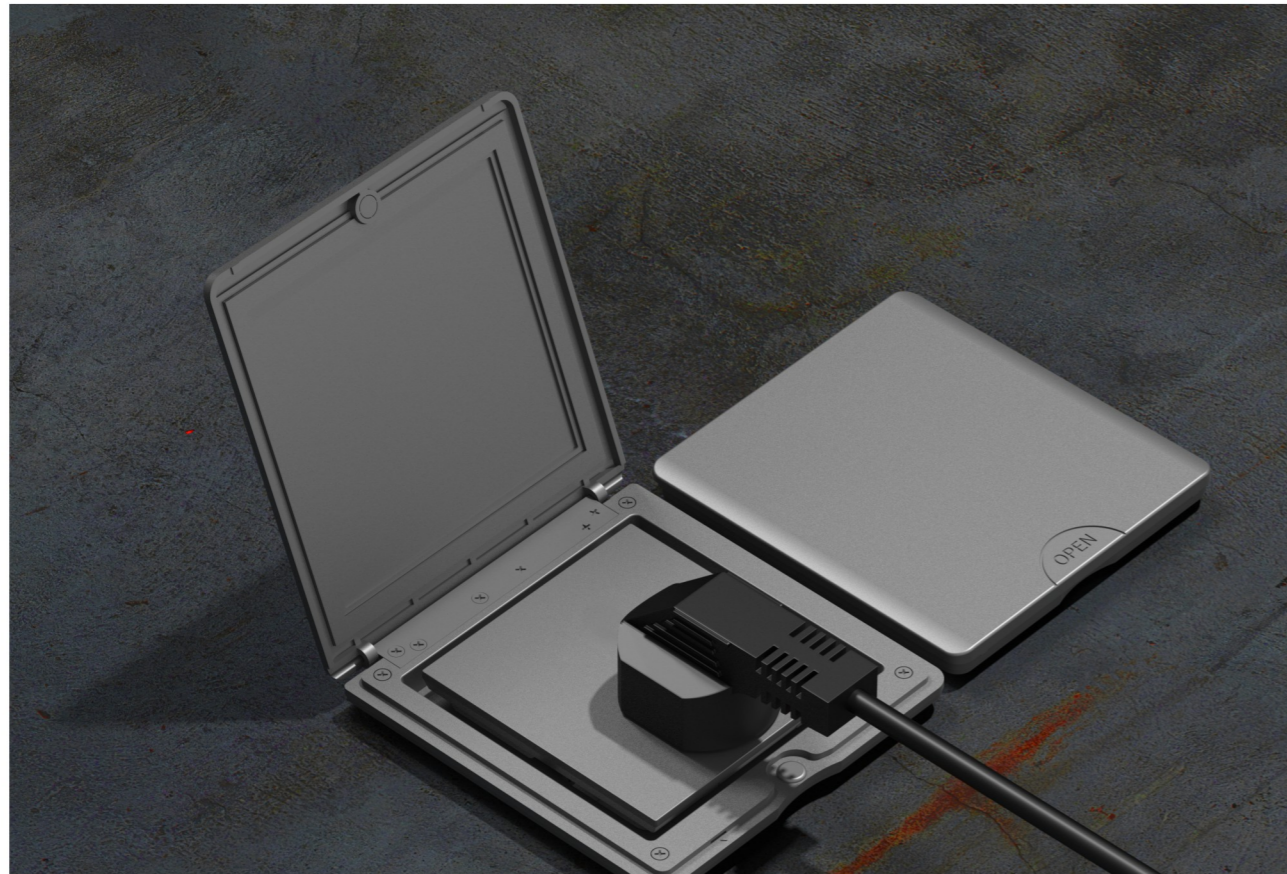
## SPECIFIC:

Item No	A90
Material	Brass
Size	266*120mm
QTY	14 pcs/ctn



# 86 FLIP TYPE SOCKET

ONE TYPE OF SOCKET THAT IS INSTALLED ON THE GROUND.



### SPECIFIC:

Item No	F86	Current and voltage:10A~250V
Material	Aluminium alloy	
Size	90*90mm	
QTY	50 pcs/ctn	



### PRODUCT FUNCTIONS

1. When the product is in use, the cover should be opened upward.
2. When the product is not in use, the cover should be closed downward.

### FEATURES AND ADVANTAGES

1. The product is easy and convenient to open
2. All functional parts's size are same and can be replaced/ combined freely.

### APPLICATION

Flooring, dining tables, marble countertops, kitchen worktops, etc. It can also be used as an ordinary socket

- Overall flame retardant
- High temperature resistant
- Imported stainless steels
- Safe and durable
- Tin-phosphor bronze

# 86 FLIP TYPE SOCKET

### SPECIFIC:

Item No	K86
Material	Aluminium alloy
Size	90*90mm
QTY	50 pcs/ctn



### SPECIFIC:

Item No	K86
Material	Zinc alloy
Size	90*90mm
QTY	50 pcs/ctn



### SPECIFIC:

Item No	F86
Material	Aluminium alloy
Size	90*90mm
QTY	50 pcs/ctn



The installation box of the floor socket and the ordinary switch socket are common.



# FLAT PUSH TYPE FLOOR SOCKET

ONE TYPE OF SOCKET THAT IS INSTALLED ON THE GROUND.



## SPECIFIC:

Item No	T70	Current and voltage:10A~250V
Material	stainless steel material (brushed gold color)	
Size	120*120mm	
QTY	20 pcs/ctn	



## PRODUCT FUNCTIONS

1. When the product is in use, the cover can be opened horizontally.
2. When the product is not in use, the cover can be closed horizontally.

## FEATURES AND ADVANTAGES

- 1.High-Capacity Design: can assemble more function parts.
- 2.All functional parts's size are same and can be replaced/combined freely.

## APPLICATION

Flooring, diningtables, marble countertops, kitchen worktops, etc.

- Overall flame retardant
- High temperature resistant
- Imported stainless steels
- Safe and durable
- Tin-phosphor bronze

# FLAT PUSH TYPE FLOOR SOCKET

## SPECIFIC:

Item No	T70
Material	Stainless steels
Size	120*120mm
QTY	20 pcs/ctn



## SPECIFIC:

Item No	T70
Material	Stainless steels
Size	120*120mm
QTY	20 pcs/ctn



## SPECIFIC:

Item No	T70
Material	Wood grain
Size	120*120mm
QTY	20 pcs/ctn



## SPECIFIC:

Item No	T85
Material	Stainless steel material (brushed gold color)
Size	135*120mm
QTY	20 pcs/ctn



## SPECIFIC:

Item No	T85
Material	Stainless steels
Size	135*120mm
QTY	20 pcs/ctn



## SPECIFIC:

Item No	T84
Material	Brass
Size	113*113mm
QTY	20 pcs/ctn



## SPECIFIC:

Item No	T83
Material	Brass
Size	135*113mm
QTY	20 pcs/ctn



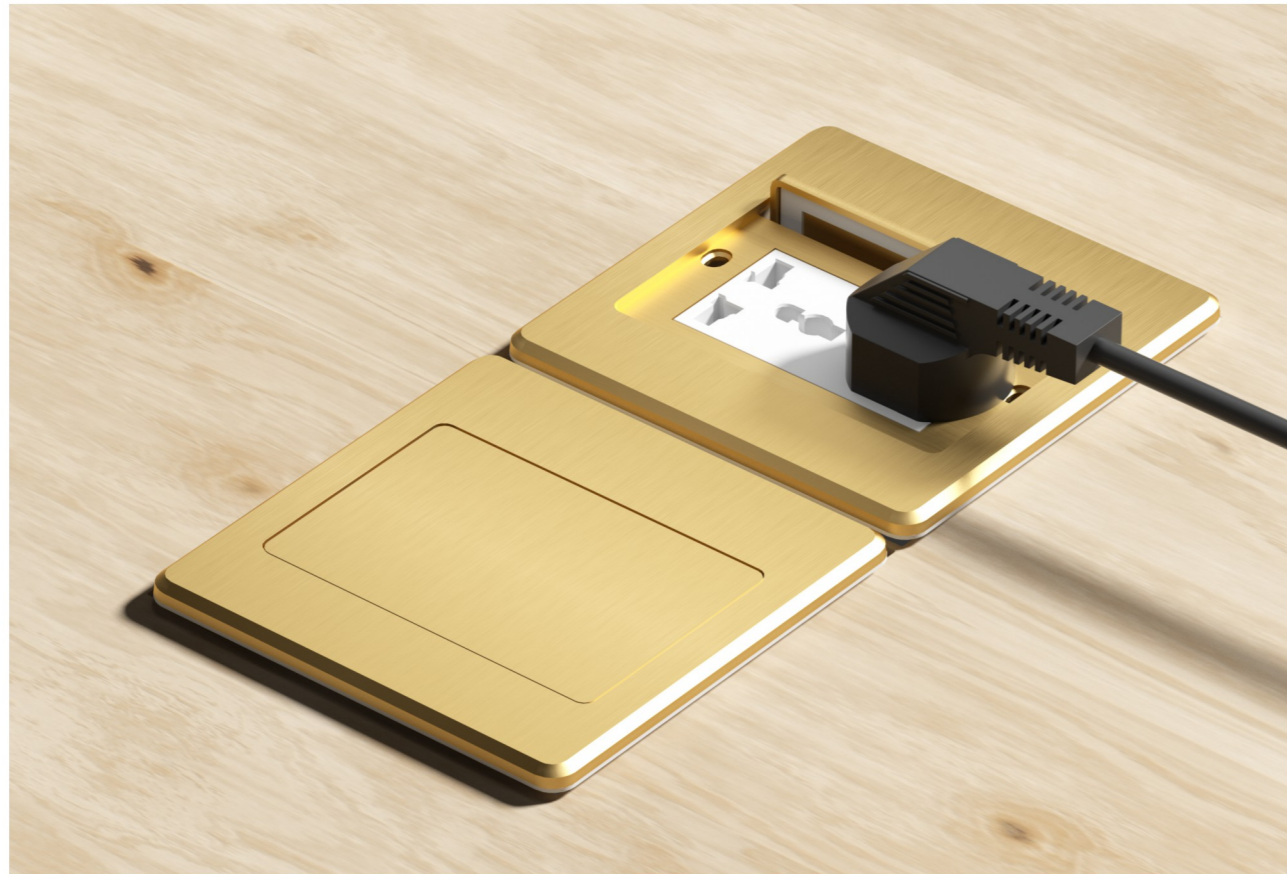
## SPECIFIC:

Item No	T80
Material	Brass
Size	120*135mm
QTY	20 pcs/ctn




# OPEN TYPE FLOOR SOCKET

ONE TYPE OF SOCKET THAT IS INSTALLED ON THE GROUND



## SPECIFIC:

Item No	K02	Current and voltage:10A~250V
Material	stainless steel material (bushed gold color)	
Size	120*120mm	
QTY	20 pcs/ctn	



## PRODUCT FUNCTIONS

1. When the product is in use, the cover can be hidden in the side.
2. When the product is not in use, the cover can be setting in surface .

## FEATURES AND ADVANTAGES

1. Easy to open and close.
2. All functional parts's size are same and can be replaced/combined freely.
3. The capacity of dual type floor socket is larger.

## APPLICATION

Flooring, dining tables,marble countertops, kitchen worktops, etc.

-  Overall flame retardant
-  High temperature resistant
-  Imported stainless steels
-  Safe and durable
-  Tin-phosphor bronze

# OPEN TYPE FLOOR SOCKET

## SPECIFIC:

Item No	K01
Material	stainless steel material (bushed gold color)
Size	120*120mm
QTY	20 pcs/ctn



## SPECIFIC:

Item No	K02
Material	stainless steel material (bushed gold color)
Size	120*120mm
QTY	20 pcs/ctn



## SPECIFIC:

Item No	K03
Material	stainless steel material (bushed gold color)
Size	120*120mm
QTY	20 pcs/ctn



## SPECIFIC:

Item No	K120-T
Material	Stainless steel
Size	120*120mm
QTY	20 pcs/ctn



## SPECIFIC:

Item No	K120-T
Material	stainless steel material (bushed gold color)
Size	120*120mm
QTY	20 pcs/ctn



## SPECIFIC:

Item No	K120
Material	Stainless steel
Size	120*120mm
QTY	20 pcs/ctn



## SPECIFIC:

Item No	K120
Material	wood grain
Size	120*120mm
QTY	10 pcs/ctn



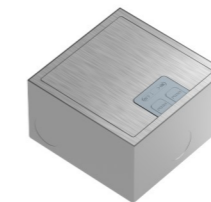
## SPECIFIC:

Item No	K52
Material	Stainless steel
Size	120*120mm
QTY	20 pcs/ctn



## SPECIFIC:

Item No	K100-M
Material	Stainless steels
Size	102*102mm
QTY	20 pcs/ctn



## DOUBLE DOOR OPEN TYPE FLOOR SOCKET

SPECIFIC:

Item No	K10
Material	Stainless steels
Size	120*120mm
QTY	20 pcs/ctn



SPECIFIC:

Item No	K10
Material	stainless steel material (Electro-gold plating)
Size	120*120mm
QTY	20 pcs/ctn



SPECIFIC:

Item No	K10 double
Material	Stainless steels
Size	120*221mm
QTY	14 pcs/ctn



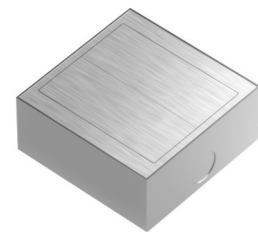
SPECIFIC:

Item No	K60
Material	Aluminum alloy
Size	135*125mm
QTY	10 pcs/ctn



SPECIFIC:

Item No	K10-M
Material	Stainless steels
Size	102*102mm
QTY	20 pcs/ctn



## MARBLE/CARPET DECORATIVE FLOOR SOCKET

SPECIFIC:

Item No	K130
Material	Stainless steels
Size	130*130mm
QTY	10 pcs/ctn



SPECIFIC:

Item No	K200
Material	Stainless steels
Size	200*130mm
QTY	10 pcs/ctn



SPECIFIC:

Item No	K100
Material	Stainless steels
Size	100*65mm
QTY	10 pcs/ctn



### PRODUCT FUNCTIONS

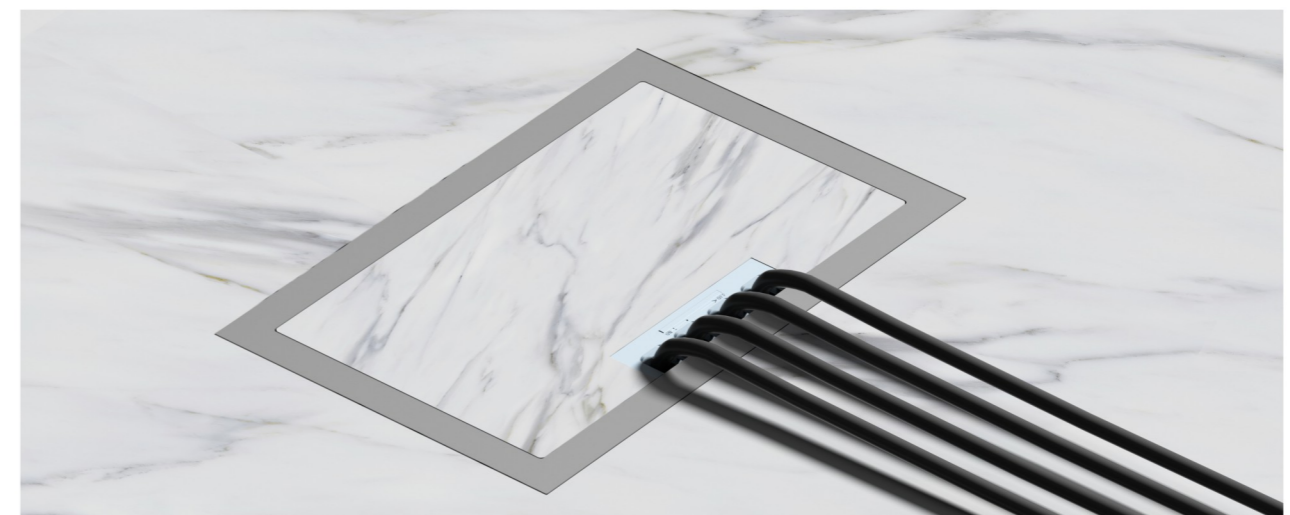
The cover of the product can be inlaid with decorative materials such as marble\wooden flooring. Functional parts can be hidden in the concealed box for safe access to electricity.

### FEATURES AND ADVANTAGES

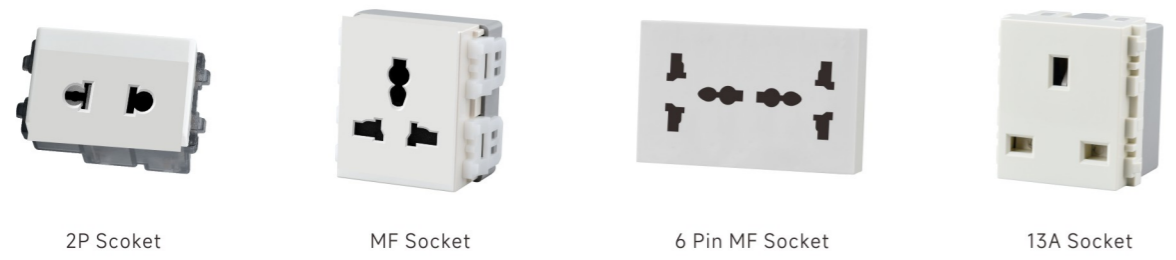
- 1.The cover of the product can be inlaid with decorative materials such as marble\wooden flooring.
2. The product is level with the ground after installation.
3. The cover will be closed after the plug inert in the socket.

### APPLICATION

Flooring, dining tables, marble countertops, kitchen worktops, etc.



## FLOOR SOCKET MODULES (HIGH VOLTAGE)

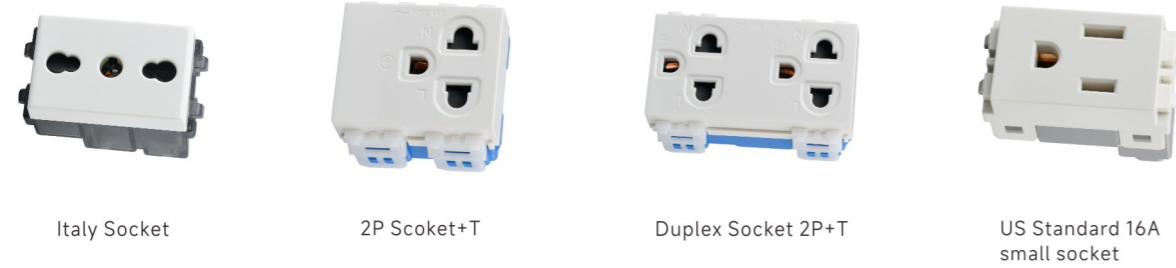


2P Socket

MF Socket

6 Pin MF Socket

13A Socket



Italy Socket

2P Socket+T

Duplex Socket 2P+T

US Standard 16A small socket

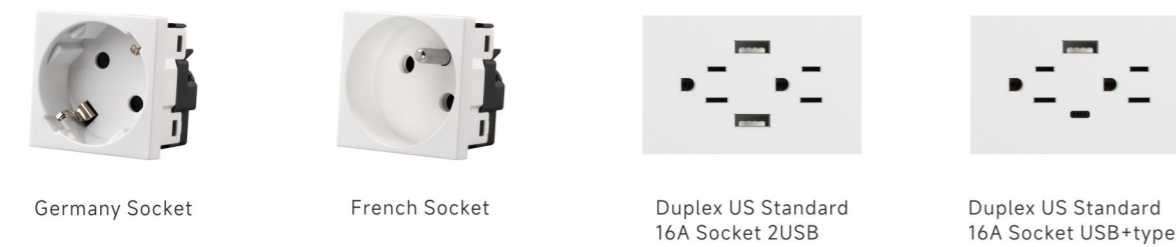


US Standard 16A socket

US Standard 20A socket

Duplex US Standard 16A Socket

Duplex US Standard 20A Socket

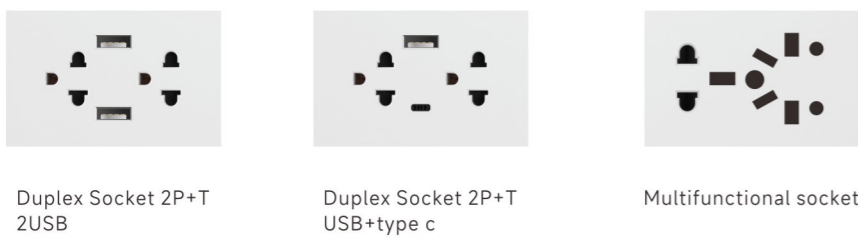


Germany Socket

French Socket

Duplex US Standard 16A Socket 2USB

Duplex US Standard 16A Socket USB+type c



Duplex Socket 2P+T 2USB

Duplex Socket 2P+T USB+type c

Multifunctional socket

## FLOOR SOCKET MODULES (ELECTRO-WEAK)



TV

Telephone

Computer

Computer CAT6

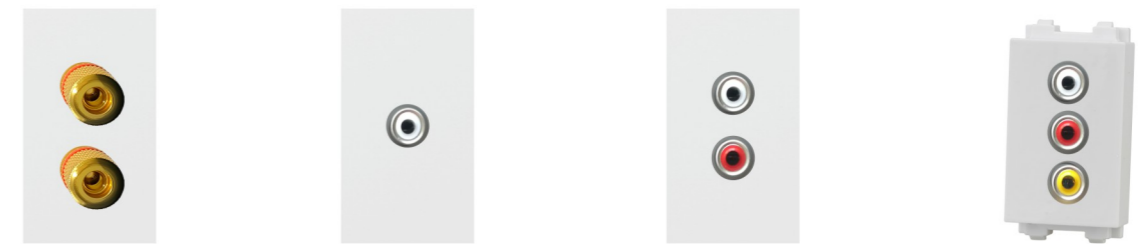


TEL+Computer Dual Computer

Microphone / Microphonesolderless

Optical fiber

Headphone / Headphone solderless



Speaker Audio

Video (Welding)

Audio/Audiosolderless

Av (audio and video)



LC fiber

SC fiber

canon female

Dual canon female

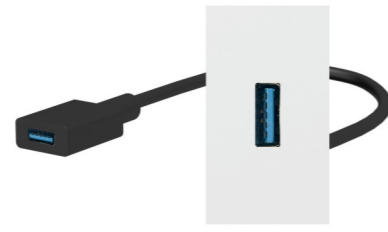
## FLOOR SOCKET MODULES (ELECTRO-WEAK)



canon male/  
canon malesolderless



USB3.0



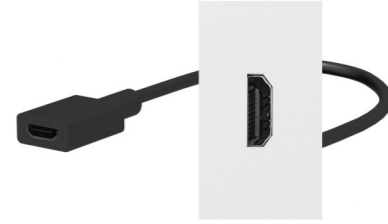
USB A Outlet adapter



VGA/VGA solderless



High Definition  
Video (HDMI)



HDMI Outlet



Six cores hand  
in hand



Eight cores hand  
in hand



Stage sound



S terminal



DVI plug-in



Double speech simple  
double Canon module

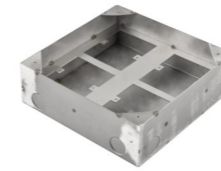


USB+type C socket



Blank plate

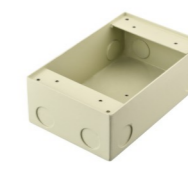
## FLOOR SOCKET BOTTOM BOX



Name: 210 4 way bottom box  
Material: Stainless steel  
Size: 200x200x60



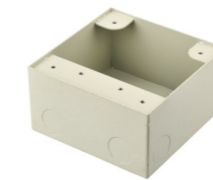
Name: 250 bottom box  
Material: Iron  
Size: 230x200x100



Name: 230 bottom box  
Material: Iron  
Size: 200x190x65



Name: 210 2 way bottom box  
Material: Iron  
Size: 210x110x80



Name: 130 bottom box  
Material: Iron  
Size: 120x120x60



Name: 110 Silver bottom box  
Material: Iron  
Size: 100x100x60



Name: Double bottom box  
Material: Iron  
Size: 198x100x55



Name: 180 bottom box  
Material: Iron(Installed 120  
size modules)  
Size: 165x130x65



Name: 86 bottom box  
Material: Iron  
Size: 75x77x50



Name: 146 bottom box  
Material: Iron  
Size: 133x133x65



Name: 120 open bottom box  
Material: Iron  
Size: 108x108x65



Name: 120 bottom box  
Material: Iron  
Size: 120x120x60



Name: Suspension bottom box  
Material: Iron  
Size: 118x118x40



Name: 120 bottom box  
Material: Iron  
Size: 100x100x55



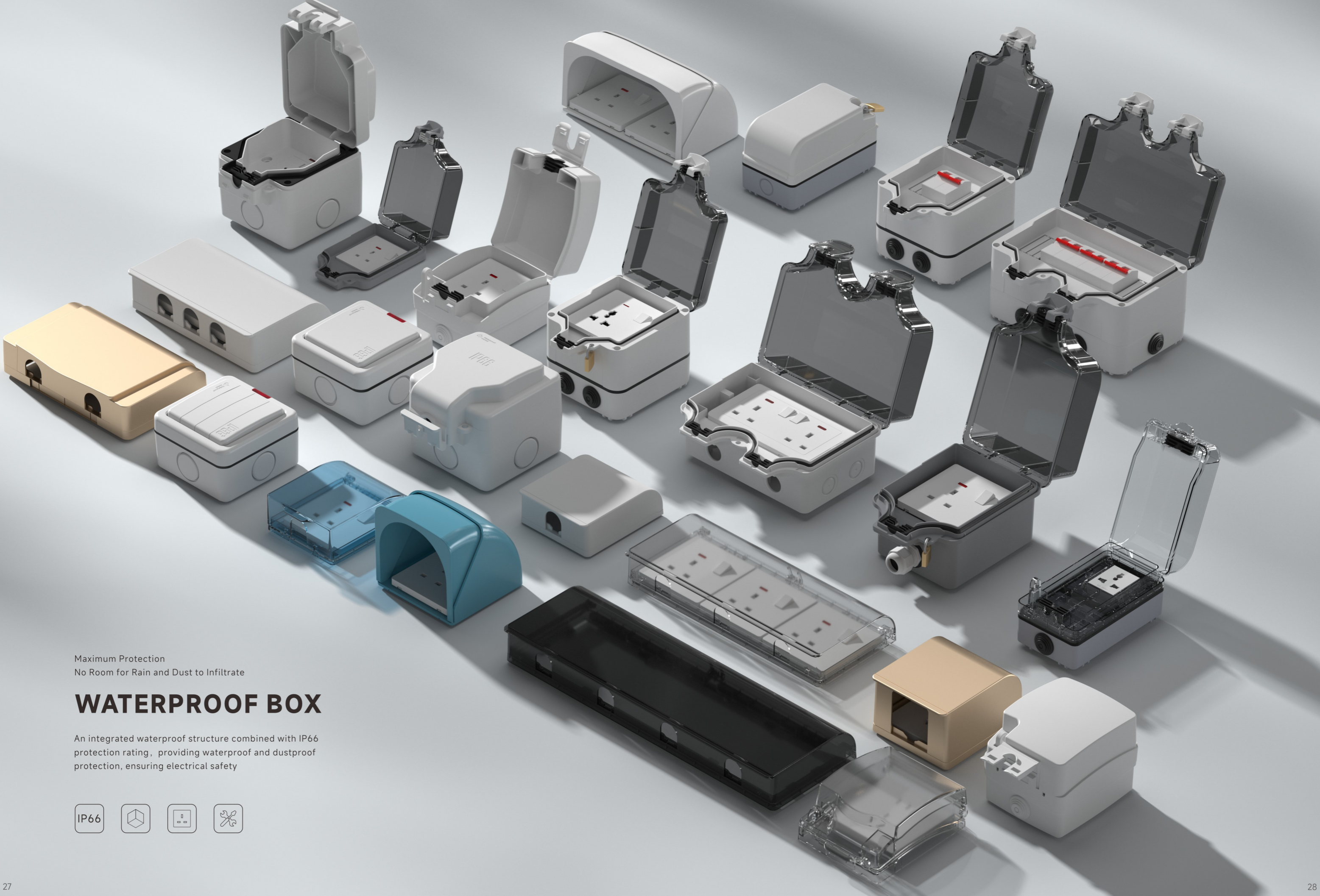
Name: 120 patent bottom box  
Material: Iron  
Size: 120x120x60



Name: 120 bottom box  
Material: Plastic  
Size: 119x119x65

# WATERPROOF BOX SERIES





Maximum Protection  
No Room for Rain and Dust to Infiltrate

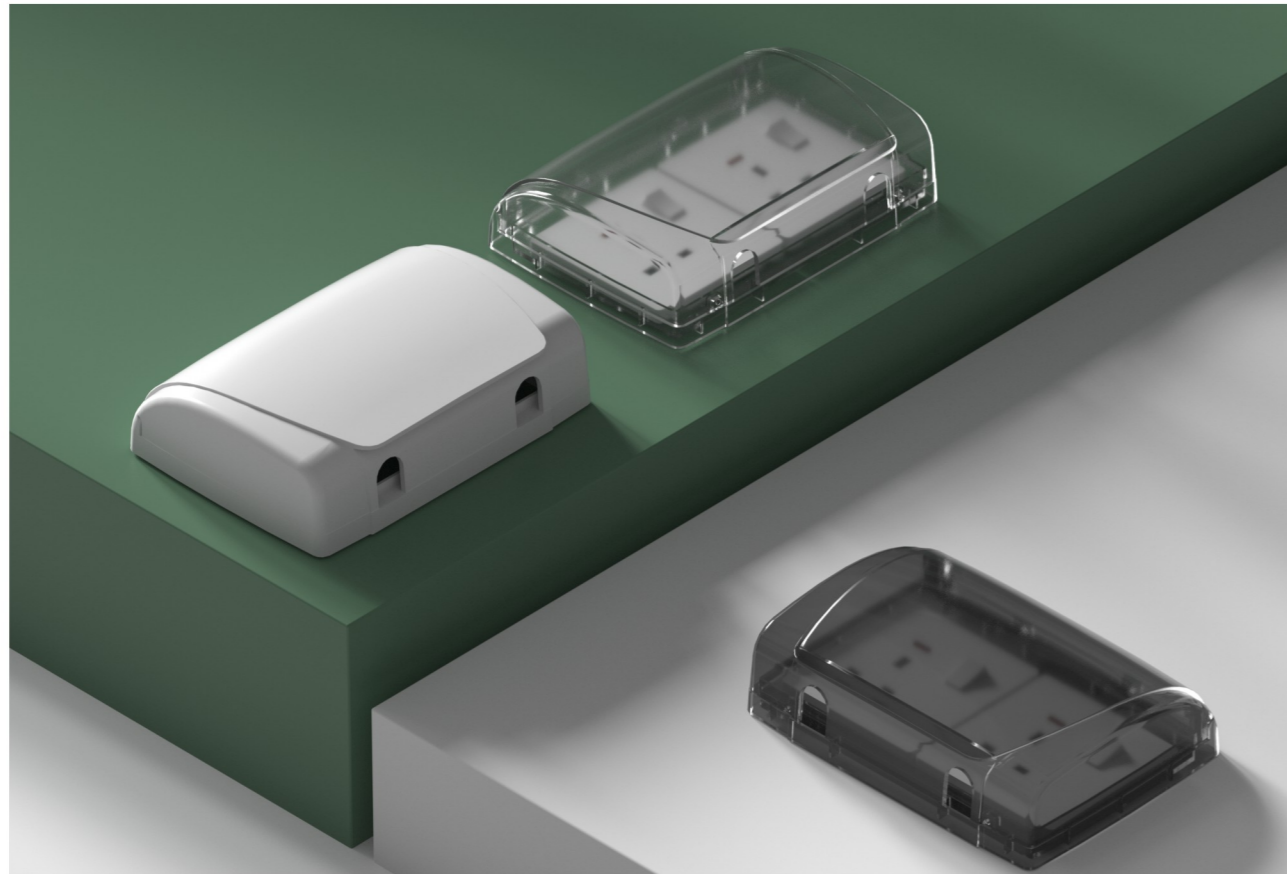
## WATERPROOF BOX

An integrated waterproof structure combined with IP66 protection rating, providing waterproof and dustproof protection, ensuring electrical safety



# LUXURY WATERPROOF BOX

ONE TYPE OF WATERPROOF BOX FOR PROTECTING THE INDOOR SWITCH AND SOCKET.



## SPECIFIC:

Model	F01-146
Series	TNC style waterproof box (thickened)(with rubber ring)
Material	ABS/PS
Pcs/ctn	100 pcs/ctn

Protection Rating: Ip55  
 Name: Waterproof Socket Box  
 The outlet protection is tighter to prevent water vapor from entering, making it safer



## PRODUCT FUNCTIONS

Preventing water vapor, dust, stains, oil, etc. from splashing into the inside switch or socket  
 Protecting the service life of switches and sockets effectively.

## APPLICATION

Bathrooms ,Kitchens ,Balconies, Low-level Mounting Zones , Wet Rooms,Courtyards,etc.



water proof



dust prevention

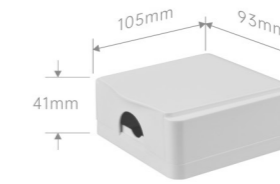


Electric safety

# LUXURY WATERPROOF BOX

## SPECIFIC:

Model	HM11
Series	ZT style waterproof box (with rubber ring)
Material	ABS/PS
Pcs/ctn	200 pcs/ctn



White



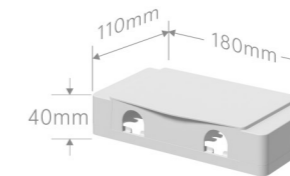
Transparent



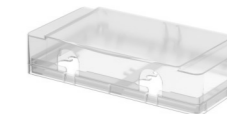
Blue transparent

## SPECIFIC:

Model	HM11-286
Series	double waterproof box
Material	ABS/PS
Pcs/ctn	100 pcs/ctn



White



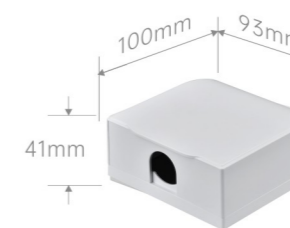
Transparent



Black transparent

## SPECIFIC:

Model	HM12
Series	GN style waterproof box (with rubber ring)
Material	ABS/PS
Pcs/ctn	200 pcs/ctn



White



Transparent



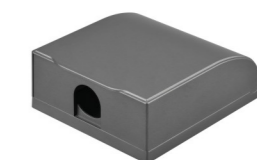
Blue transparent



Black transparent



Gold

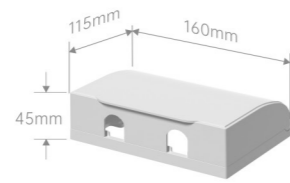


Grey

## LUXURY WATERPROOF BOX

SPECIFIC:

Model	HM12-146
Series	GN Type 146 Waterproof Box
Material	ABS/PC
Pcs/ctn	100 pcs/ctn



White



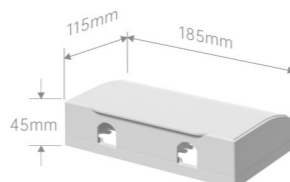
Transparent



Black transparent

SPECIFIC:

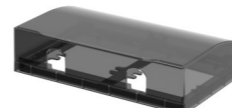
Model	HM12-286
Series	GN type double waterproof box
Material	ABS/PC
Pcs/ctn	100 pcs/ctn



White



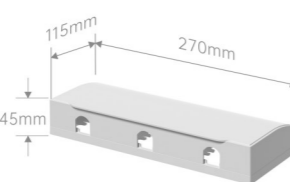
Transparent



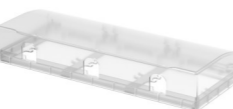
Black transparent

SPECIFIC:

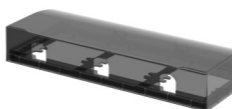
Model	HM12-386
Series	GN type triple waterproof box
Material	ABS/PC
Pcs/ctn	80 pcs/ctn



White



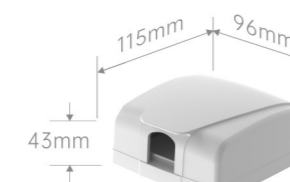
Transparent



Black transparent

SPECIFIC:

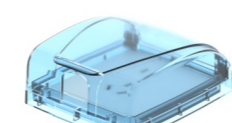
Model	F01
Series	TNC style waterproof box (thickened)(with rubber ring)
Material	ABS/PS
Pcs/ctn	200 pcs/ctn



White



Transparent

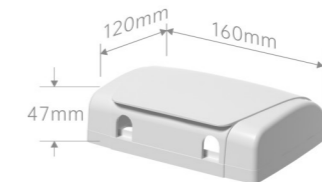


Blue transparent

## LUXURY WATERPROOF BOX

SPECIFIC:

Model	F01-146
Series	TNC style waterproof box (thickened)(with rubber ring)
Material	ABS/PS
Pcs/ctn	100 pcs/ctn



White



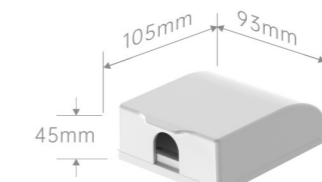
Transparent



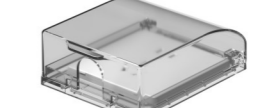
Black transparent

SPECIFIC:

Model	F03
Series	new GN style waterproof box (thickened)(with rubber ring)
Material	ABS/PS
Pcs/ctn	200 pcs/ctn



White



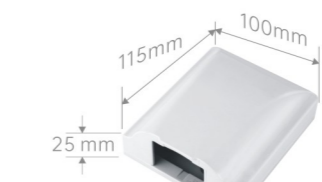
Transparent



Black transparent

SPECIFIC:

Model	HM09
Series	86 Type boutique waterproof box
Material	ABS/PS
Pcs/ctn	200 pcs/ctn



White



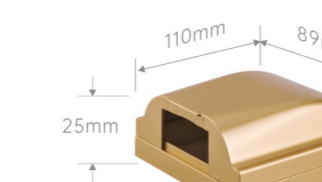
Transparent



Black transparent

SPECIFIC:

Model	HM09
Series	ABB style waterproof box (with rubber ring)
Material	ABS/PS
Pcs/ctn	200 pcs/ctn



Gold

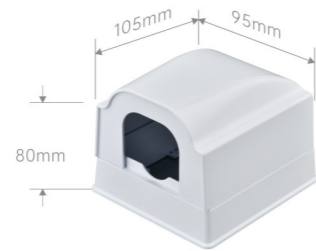


Grey

## LUXURY WATERPROOF BOX

### SPECIFIC:

Model	HM09-ZG
Series	HM09-ZG rised self-adhesive type
Material	ABS/PS
Pcs/ctn	120 pcs/ctn



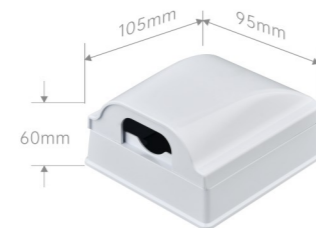
White



Transparent

### SPECIFIC:

Model	H09
Series	H09 surface waterproof box (XMZ)
Material	ABS/PS
Pcs/ctn	100 pcs/ctn



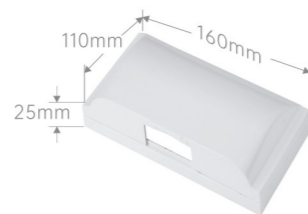
White



Transparent

### SPECIFIC:

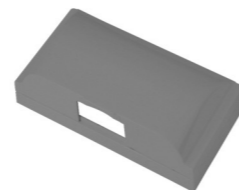
Model	HM09
Series	146 type waterproof boxes
Material	ABS/PS
Pcs/ctn	100 pcs/ctn



White



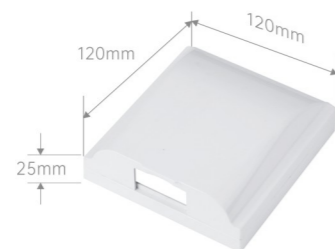
Gold



Abrazine grey

### SPECIFIC:

Model	120*120 type
Material	ABS
Pcs/ctn	100 pcs/ctn

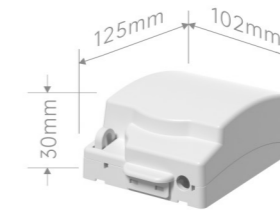


White

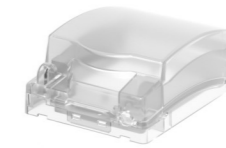
## LUXURY WATERPROOF BOX

### SPECIFIC:

Model	HM19
Series	86 screw types
Material	ABS/PS
Pcs/ctn	100 pcs/ctn



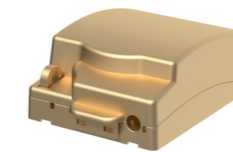
White



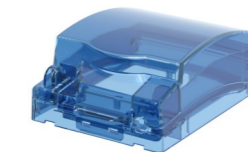
Transparent



Black transparent



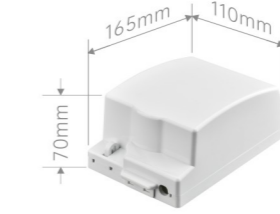
Gold



Blue transparent

### SPECIFIC:

Model	HM19
Series	Raised type/screw self- adhesive type
Material	ABS/PS
Pcs/ctn	100 pcs/ctn



White



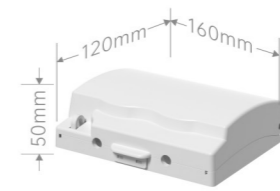
Transparent



Black transparent

### SPECIFIC:

Model	HM19-146
Series	146 screw types
Material	ABS/PS
Pcs/ctn	80 pcs/ctn



White



Transparent

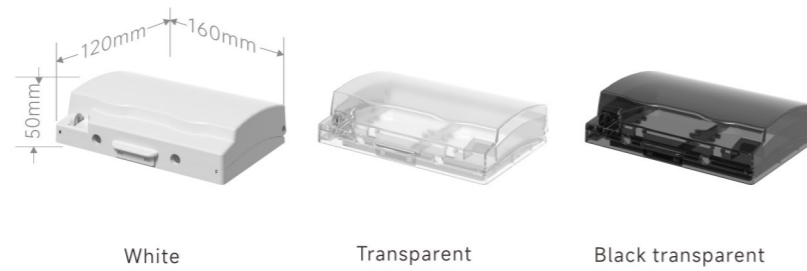


Black transparent

## LUXURY WATERPROOF BOX

SPECIFIC:

Model	HM19-SL
Series	two 86 screw types
Material	ABS/PS
Pcs/ctn	80 pcs/ctn



White

Transparent

Black transparent

SPECIFIC:

Model	HM17-Z-K
Series	Self adhesive/screw type waterproof box
Material	PP
Pcs/ctn	200 pcs/ctn



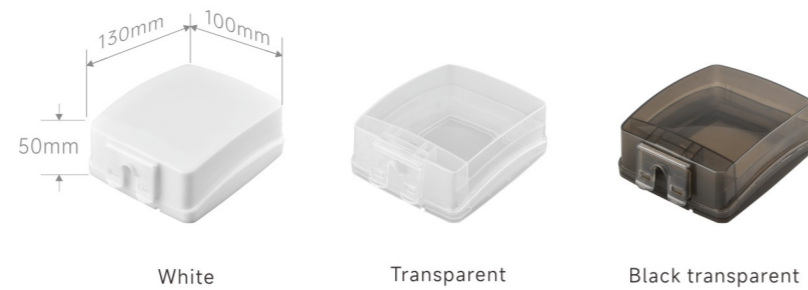
White

Transparent

Black transparent

SPECIFIC:

Model	HM17
Series	Self-adhesive/screw self-adhesive
Material	PP
Pcs/ctn	100 pcs/ctn



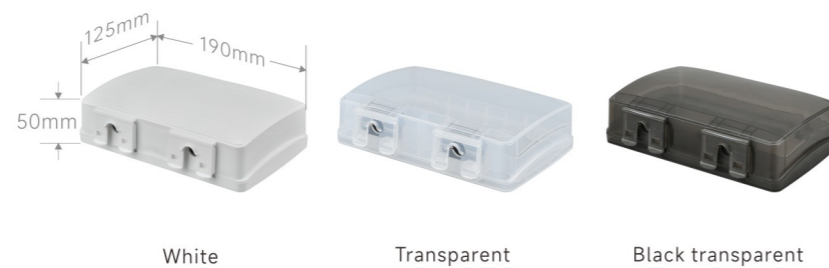
White

Transparent

Black transparent

SPECIFIC:

Model	HM17-Z-SL
Series	Self adhesive/screw type waterproof box
Material	PP
Pcs/ctn	100 pcs/ctn



White

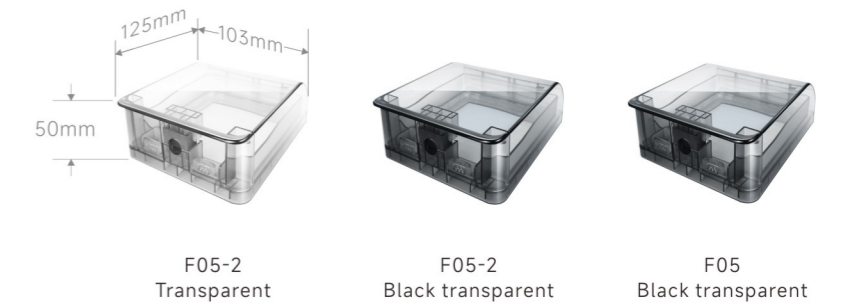
Transparent

Black transparent

## LUXURY WATERPROOF BOX

SPECIFIC:

Model	F05/F05-2
Series	86Type waterproof box (with rubber ring)
Material	PS/PC
Pcs/ctn	100 pcs/ctn



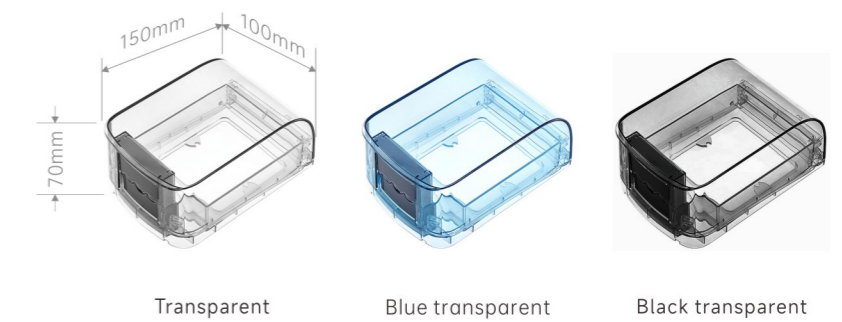
F05-2  
Transparent

F05-2  
Black transparent

F05  
Black transparent

SPECIFIC:

Model	F06
Series	Raised type waterproof box (with rubber ring)
Material	PS
Pcs/ctn	100 pcs/ctn



Transparent

Blue transparent

Black transparent



# SELF ADHESIVE WATERPROOF BOX

ONE TYPE OF WATERPROOF BOX FOR PROTECTING THE INDOOR SWITCH AND SOCKET.



## SPECIFIC:

Model	F05	Process: Die casting molding Installation method: Adhesive installation Easy installation with one tear and one stick
Series	118 screws/self-adhesive	
Material	ABS/PS	
Pcs/ctn	150 pcs/ctn	

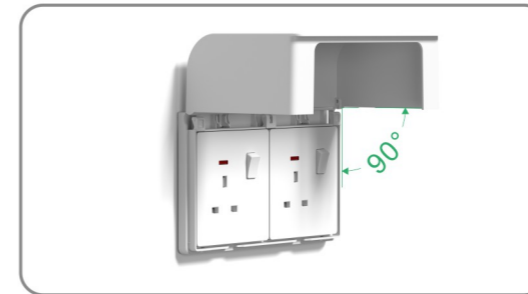


## PRODUCT FUNCTIONS

Reverting water vapor, dust, stains, oil, etc. from splashing into the inside switch or socket, and Protecting the service life of switches and sockets effectively.

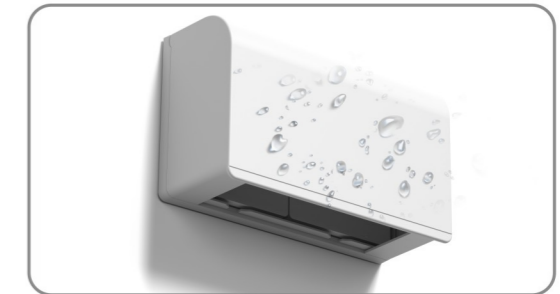
## GREAT DESIGN IN DETAIL

When pasting, be sure to stick it to the waterproof box first, and then stick it to the wall. If you stick it to the wall first and then to the waterproof box, it will be misaligned and not stick firmly



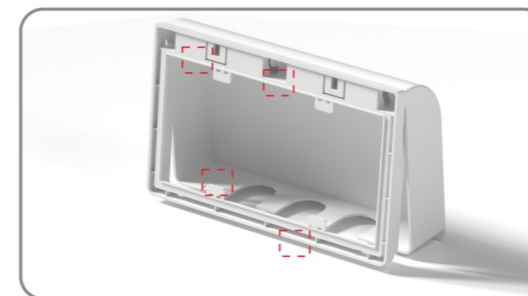
### Open the contract to about 90 degrees for flexible hovering.

The box lid can hover in the 90-degree position without falling off, making it more convenient to open and close.



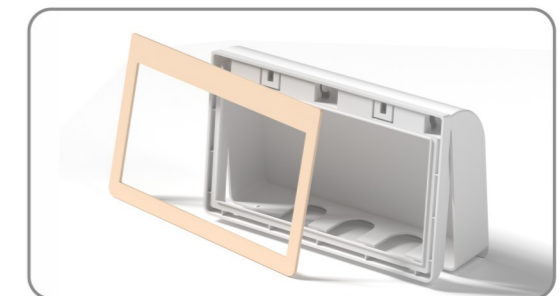
### 360° all-around comprehensive protection.

Thoughtful and meticulous protection ensures the safety of your family's electrical usage.



### Screw and Clamping Installation

Utilizes four panel clamps for secure fastening. Ensure to keep the mounting feet and then secure with panel



### Adhesive Installation

Uses double-sided sponge adhesive for fixation. Remove the mounting feet before proceeding with installation.

## APPLICATION

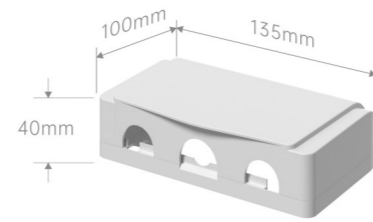
Bathrooms, kitchens, balconies, low-lying areas, bathrooms, and courtyards.



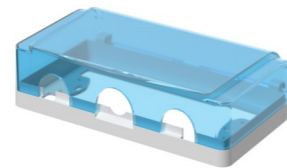
## SELF ADHESIVE WATERPROOF BOX

### SPECIFIC:

Model	ZT style
Series	118 screw types(two-bit)
Material	ABS/PS
Pcs/ctn	200 pcs/ctn



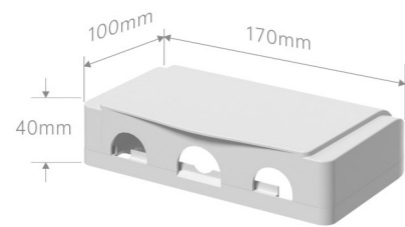
White



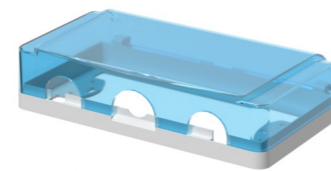
Blue transparent

### SPECIFIC:

Model	ZT style
Series	118 screw types(three)
Material	ABS/PS
Pcs/ctn	100 pcs/ctn



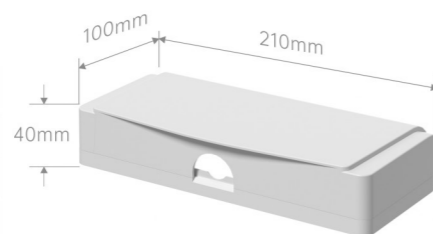
White



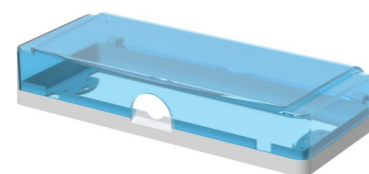
Blue transparent

### SPECIFIC:

Model	ZT style
Series	118 screw types(four)
Material	ABS/PS
Pcs/ctn	100 pcs/ctn



White

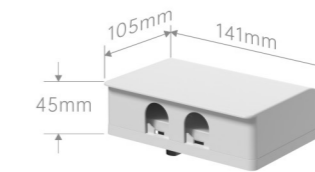


Blue transparent

## SELF ADHESIVE WATERPROOF BOX

### SPECIFIC:

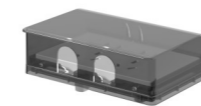
Model	F05
Series	118 screws/self-adhesive
Material	ABS/PS
Pcs/ctn	150 pcs/ctn



White



Transparent



Black transparent



Gold



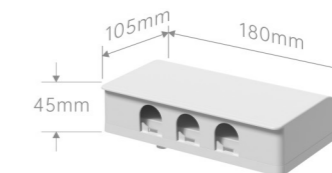
Abrazine grey



Abrazine black

### SPECIFIC:

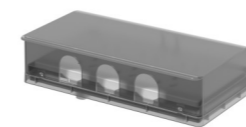
Model	F05
Series	118 screws/self-adhesive
Material	ABS/PS
Pcs/ctn	100 pcs/ctn



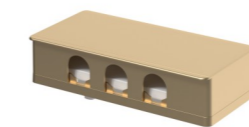
White



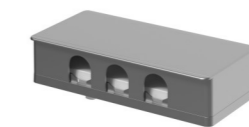
Transparent



Black transparent



Gold



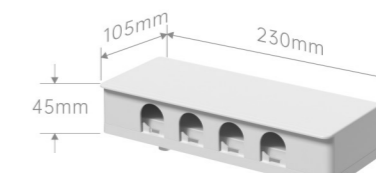
Abrazine grey



Abrazine black

### SPECIFIC:

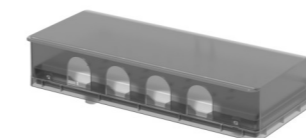
Model	F05
Series	118 screws/self-adhesive
Material	ABS/PS
Pcs/ctn	100 pcs/ctn



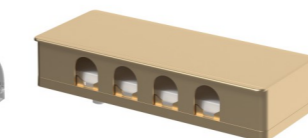
White



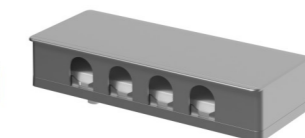
Transparent



Black transparent



Gold



Abrazine grey



Abrazine black

# OUTDOOR CHARGING PILE WATERPROOF BOX

ONE TYPE OF WATERPROOF BOX FOR PROTECTING THE CHARGING SOCKET.



## SPECIFIC:

Model	C5
Series	Self-adhesive charging pile rain cover
Material	PP
Pcs/ctn	100

Applicable scenarios: Semi outdoor charging locations  
Residential/outdoor electric scooter charging station dedicated



## PRODUCT FUNCTIONS

- 1.All-Weather Protection: Shields outlets from rain, dust, mold, and UV damage, significantly extending service life.
- 2.Safety Assurance: Prevents rust and water ingress the socket during rainy time. Eliminating electrical risks of fire. Protecting the safety of electrical appliances effectively.



water proof



dust prevention



Arc shaped cover



Easy installation

## APPLICATION

Residential complexes, parks, balconies, squares, areas with electric bicycles, etc.

# OUTDOOR CHARGING PILE WATERPROOF BOX

## SPECIFIC:

Model	ZS self-adhesive phone holder
Color	white/gold/gery
material	ABS
Pcs/ctn	180 pcs/ctn



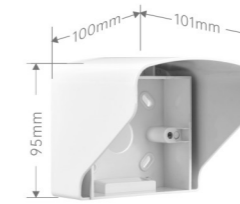
## SPECIFIC:

Model	S1 double phone holder
Color	white/gold/gery
material	ABS
Pcs/ctn	200 pcs/ctn



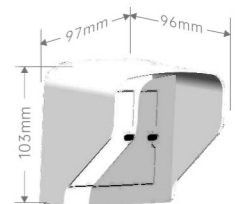
## SPECIFIC:

Model	C1
Series	Charging pile rain cover
Material	ABS
Pcs/ctn	100 pcs/ctn



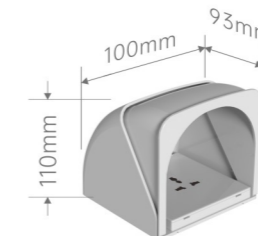
## SPECIFIC:

Model	C2
Series	Charging pile rain cover
Material	ABS
Pcs/ctn	180 pcs/ctn



## SPECIFIC:

Model	C5
Series	Self-adhesive charging pile rain cover
Material	PP
Pcs/ctn	100 pcs/ctn



White



Transparent



Black transparent



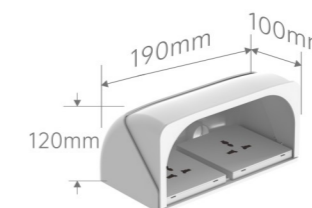
Orange



Light blue

## SPECIFIC:

Model	C5-SL
Series	Self-adhesive charging pile rain cover
Material	PP
Pcs/ctn	120 pcs/ctn



White



Transparent



Black transparent



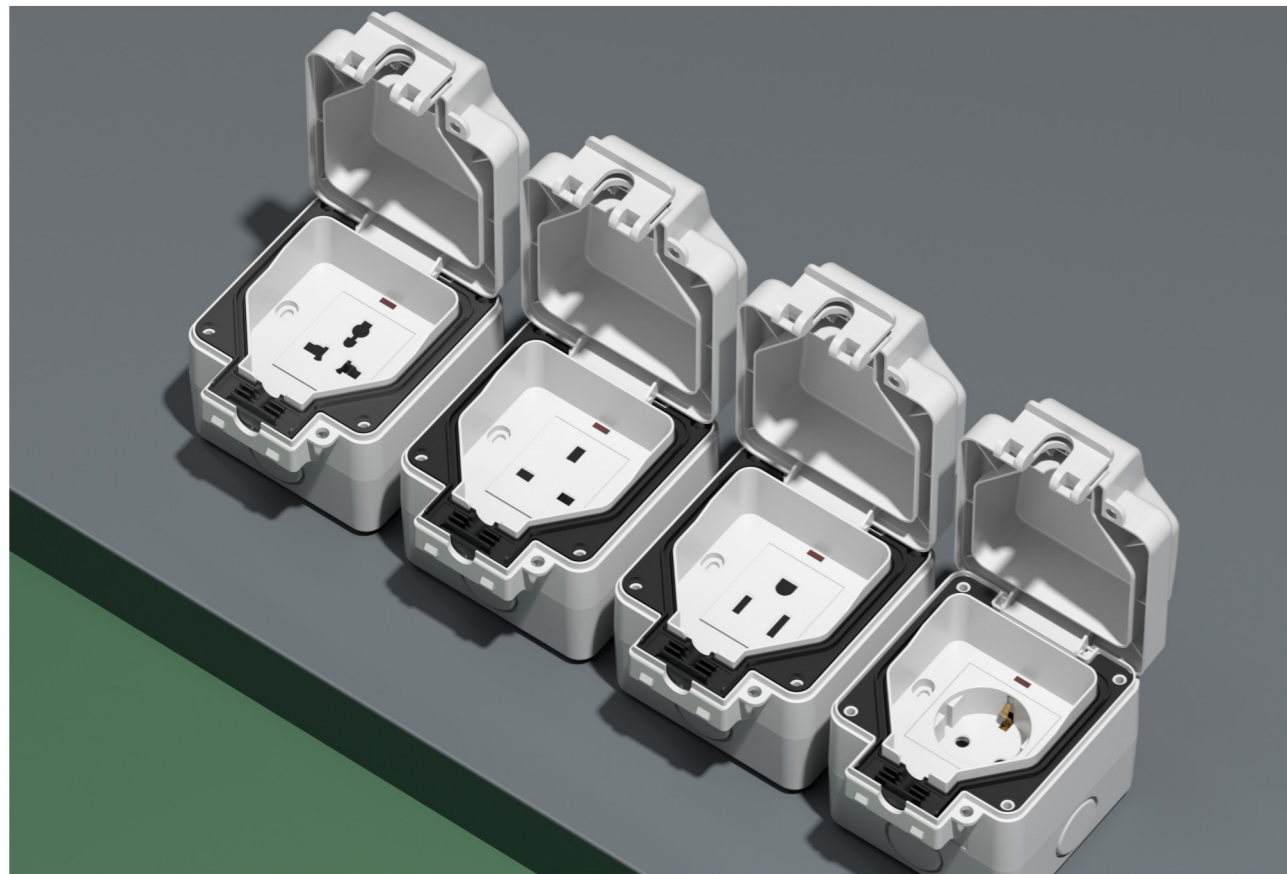
Orange



Light blue

# IP66 OUTDOOR WATERPROOF BOX

ONE TYPE OF WATERPROOF SWITCH AND SOCKET FOR OUTDOOR USING.

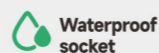


## SPECIFIC:

Item No	FW-6
Name	Outdoor waterproof socket
Material	PC
QTY	100 pcs/ctn

### Multiple socket options

Protection Rating: Ip66  
 Installation method: Surface mounted  
 Scope of application: Can be installed both indoors and outdoors



## PRODUCT FUNCTIONS

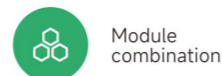
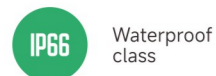
1. Made of high-grade PP material, with the characteristics of impact resistance, waterproof, dustproof, UV resistance, high temperature resistance and corrosion resistance. Waterproof grade up to IP66.
2. IP66 grade Protection - fully enclosed isolation chamber design for complete waterproof/dustproof safety, ensuring ultimate household electrical protection.

## FEATURES AND ADVANTAGES

1. The top cover can be suspended at 95° without falling off, making it easier to open and close.
2. Applicable temperature: -30°C to +60°C.
3. With Locking function, anti-freezing, high temperature resistance, anti-theft of electricity.

## APPLICATION

Bathroom, balcony, shop, RV, parking, kitchen, etc



# IP66 OUTDOOR WATERPROOF BOX

## SPECIFIC:

Item No	FW-6
Name	Outdoor Waterproof Switch
Material	PC
QTY	100 pcs/ctn



1 gang 1 way switch



2 gang 1 way switch



3 gang 1 way switch



4 gang 1 way switch



20A switch



45A switch



door bell switch



door exit switch

## SPECIFIC:

Item No	FW-6
Name	Outdoor waterproof socket
Material	PC
QTY	100 pcs/ctn



3pin MF socket



BS socket



Thai socket



America socket

## SPECIFIC:

Item No	FW-6
Name	Outdoor waterproof socket(Type 45)
Material	PC
QTY	100 pcs/ctn



3pin MF socket



BS socket



America socket



France Socket



Germany Socket



Italian Socket



Brazil Socket

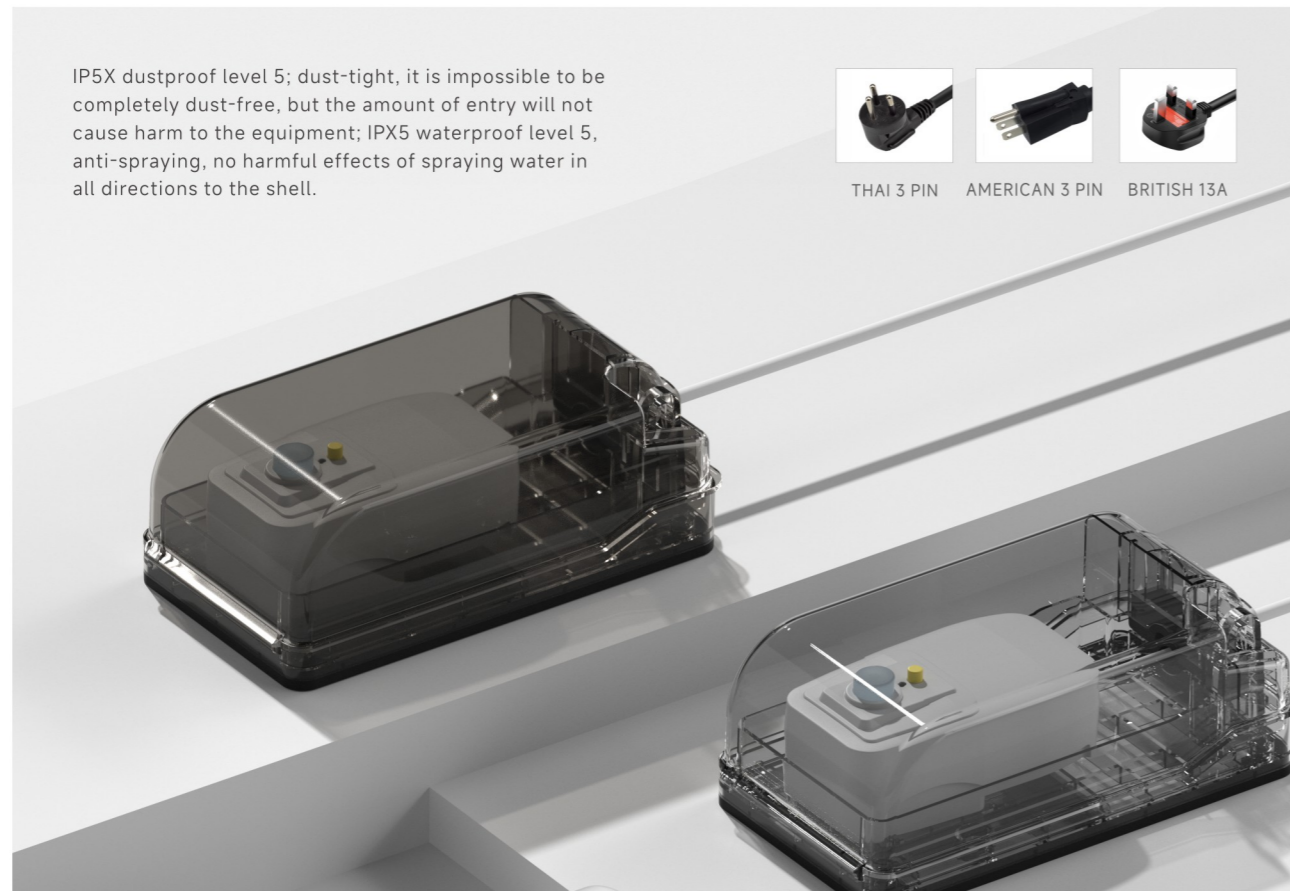


India/South Africa Socket

# IP55 LEAKAGE PROTECTION WATERPROOF BOX

ONE TYPE OF AIRTIGHT & WATERPROOF & CONJUNED SOCKET FOR PROTECTING LEAKAGE PROTECTION SOCKET (GFCI).

IP5X dustproof level 5; dust-tight, it is impossible to be completely dust-free, but the amount of entry will not cause harm to the equipment; IPX5 waterproof level 5, anti-spraying, no harmful effects of spraying water in all directions to the shell.



## SPECIFIC:

Model	HM-5	Rated Power: 10A/125VAC/60Hz Protection Rating: IP55 Multiple 20mm Cable gland enter from all sides. Suitable for outdoor use.
Series	surface mouted leakage protection waterproof box	
Material	PP	
Colour	White/Transparent/Black transparent	
Pcs/ctn	100 pcs/ctn	



## PRODUCT FUNCTIONS

- Made of high-grade PP material, with the characteristics of impact resistance, waterproof, dustproof, UV resistance, high temperature resistance and corrosion resistance. Waterproof grade up to IP66.
- With a lock function to prevent power theft and accidental opening, preventing children from electric shock hazards effectively.

## FEATURES AND ADVANTAGES

Prevent children from electric shock, oil corrosion, splash wet socket, anti-theft electricity

## APPLICATION

Using in that places where leakage protection plugs are installed, such as bathrooms, balconies, stores, RVs, parking lots, kitchens, etc.

- IP55 Waterproof class
- Lock design
- Super space
- Module combination

# IP55 LEAKAGE PROTECTION WATERPROOF BOX

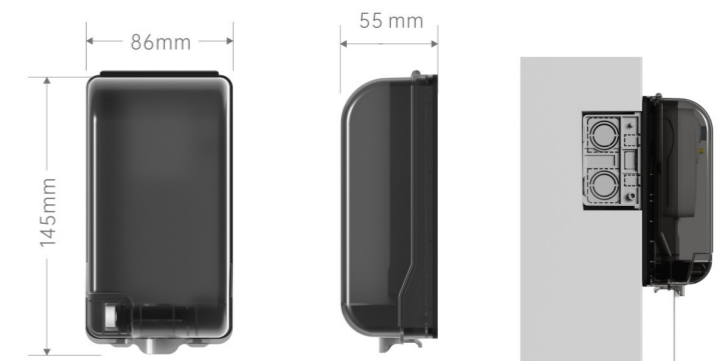
## SPECIFIC:

Model	HM-5
Series	surface mouted leakage protection waterproof box
Material	PP
Colour	White/Transparent/Black transparent
Pcs/ctn	100 pcs/ctn



## SPECIFIC:

Model	HM-5
Series	wall mouted leakage protection waterproof box
Material	PP
Colour	White/Transparent/Black transparent
Pcs/ctn	100 pcs/ctn



3pin MF socket

BS socket

Thai socket

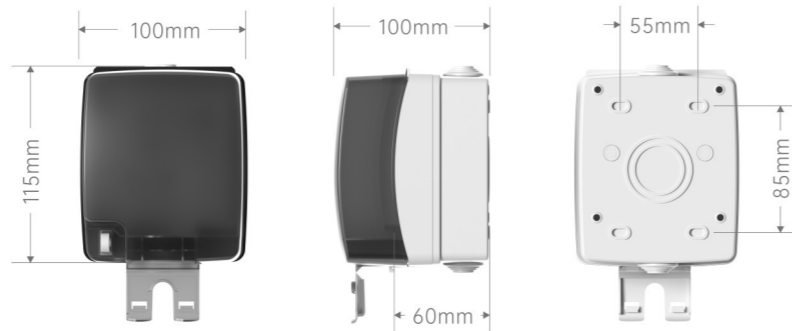
America socket

## OUTDOOR IP55 WATERPROOF BOX

Single 86 size drawing:

SPECIFIC:

Model	FW-1
Series	Single 86 IP55 waterproof box
Material	PP
Colour	White/Transparent/Black transparent
Pcs/ctn	60 pcs/ctn



White

Transparent

Black transparent



FW-1  
3pin MF socket

FW-1  
13A switched socket

FW-1  
5pin MF switched socket

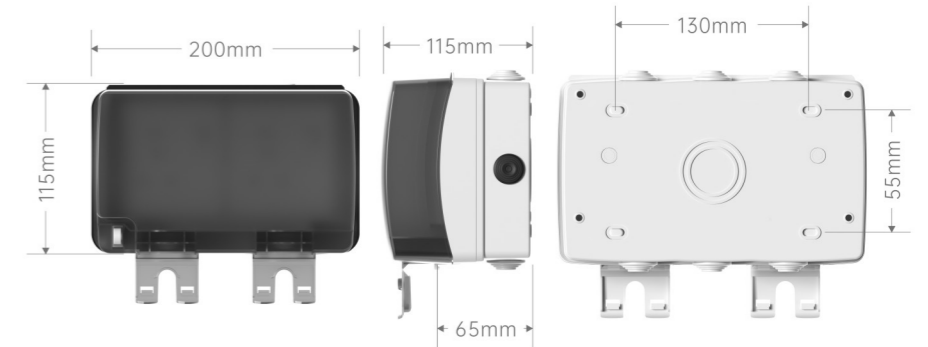
FW-1  
European socket

## OUTDOOR IP55 WATERPROOF BOX

double 86 size drawing:

SPECIFIC:

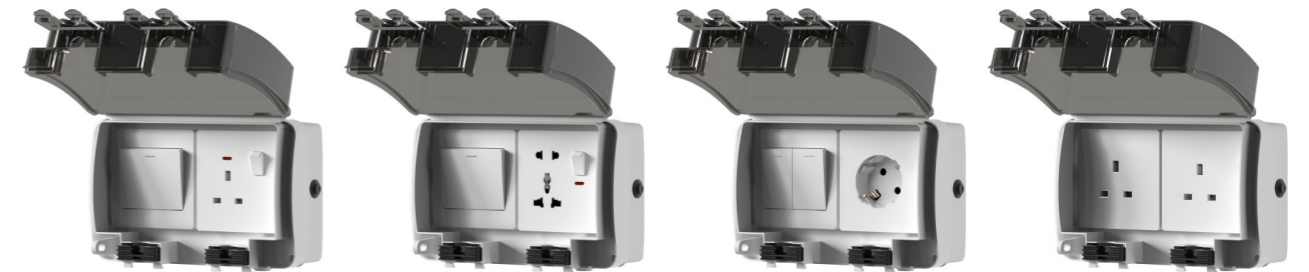
Model	FW-1
Series	Double 86 IP55 waterproof box
Material	PP
Colour	White/Transparent/Black transparent
Pcs/ctn	30 pcs/ctn



White

Transparent

Black transparent



FW-1  
1gang+13A switched socket

FW-1  
1gang+5pin MF socket

FW-1  
2gang+European socket

FW-1  
double 13A socket

# IP66 WATERPROOF

## ONE TYPE OF WATERPROOF BOX FOR PRETECTING THE OUTDOOR SWITCHES & SOCKET



### SPECIFIC:

Model	FW-X186	Rated Power: 10A/125VAC/60Hz Protection Rating: IP66 Multiple 20mm Cable gland enter from all sides. Suitable for outdoor use.
Series	Single 86 type outdoor waterproof box	
Material	PC	
Colour	Black transparent	
Pcs/ctn	60 pcs/ctn	



### PRODUCT FUNCTIONS

- Made of high-grade PC material, with the characteristics of impact resistance, waterproof, dustproof, UV resistance, high temperature resistance and corrosion resistance. Waterproof grade up to Ip66.
- With a lock function to prevent power theft and accidental opening, preventing children from electric shock hazards effectively.

### FEATURES AND ADVANTAGES

- Suitable for all switches and sockets with dimensions 86-95mm.
- Applicable temperature: -30°C to +60°C.
- With Locking function, anti-freezing, high temperature resistance, anti-theft of electricity.

### GREAT DESIGN IN DETAIL

IP6X dustproof class 6; dust-tight, no dust entry; IPX6 waterproof class 6, anti-strong water injection, strong water injection in all directions to the housing No harmful effects.



Made of rubber material, Seal better.



Latch lock, plug line can be direct Connected and waterproof box lid sealed



Keyhole design can be directly installed padlock, Prevent electricity theft.



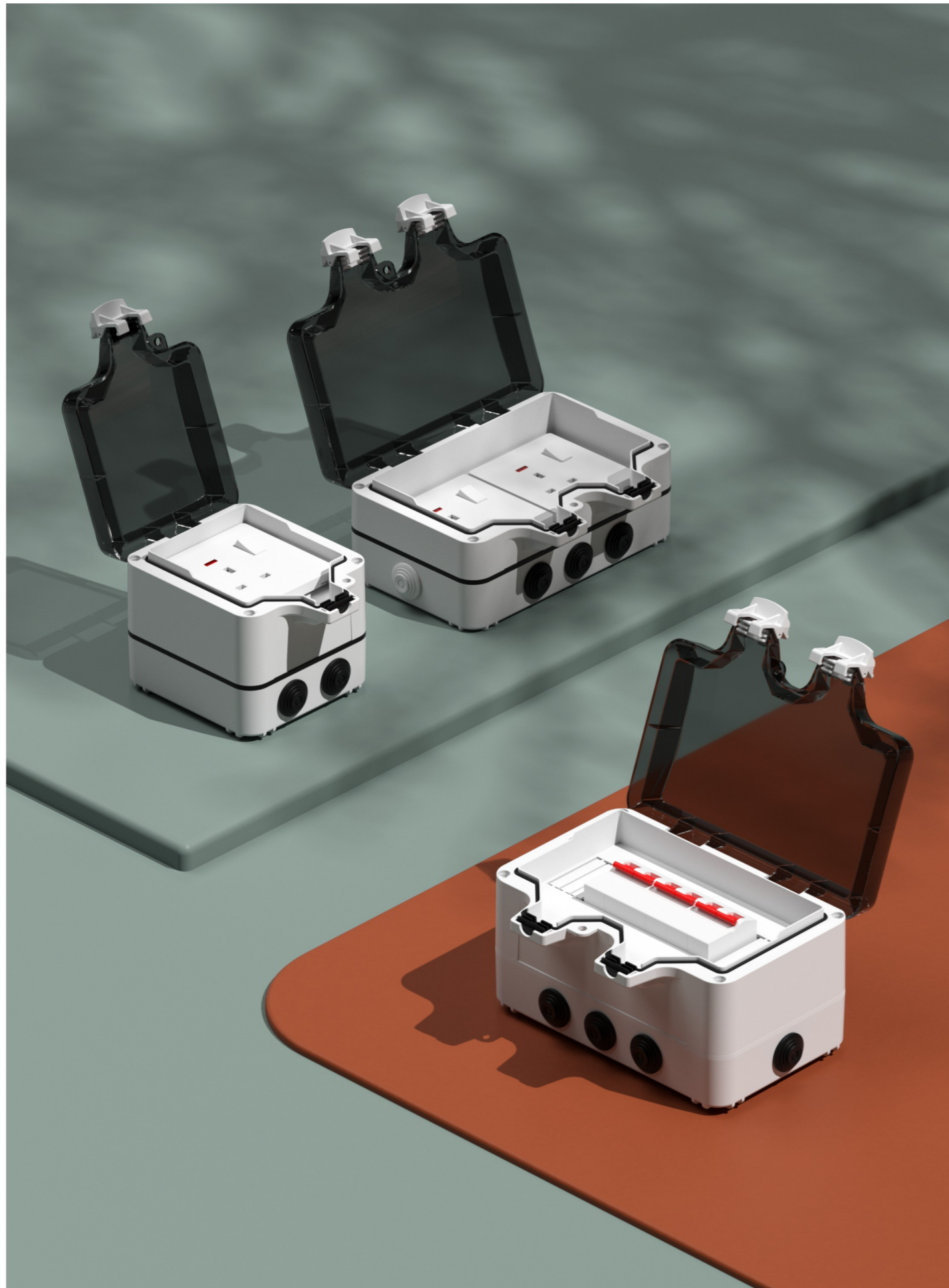
The touch is delicate and soft Slide to prevent bumping

- Waterproof class
- Lock design
- Super space
- Module combination

### APPLICATION

Gardens ,Garages , Patios , Lawns , Sheds , Bathrooms , Pool Areas,Lawn Mowers , Trimmers,etc.





## OUTDOOR IP66 WATERPROOF BOX

Single 86 size diagram:

SPECIFIC:

Model	FW-2
Series	86 Outdoor waterproof
Material	PS/PC
Colour	Transparent / Black transparent
Pcs/ctn	60 pcs/ctn



FW-2  
3pin MF socket



FW-2  
13A switched socket



FW-2  
5pin MF switched socket

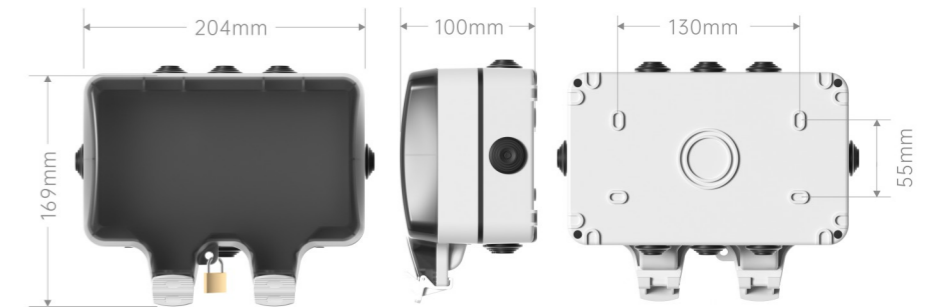


FW-2  
European socket

Dual 86 size diagram:

SPECIFIC:

Model	FW-2
Series	Double outdoor waterproof
Material	PS/PC
Colour	Transparent / Black transparent
Pcs/ctn	30 pcs/ctn



FW-2  
1 gang+13A switched socket



FW-2  
1 gang+5pin MF switched socket



FW-2  
2 gang+European socket



FW-2  
double 13A socket

# OUTDOOR IP66 WATERPROOF BOX

Single 86 size diagram:

SPECIFIC:

Model	FW-3
Series	Single outdoor waterproof box for circuit breaker
Material	PS/PC
Colour	Transparent / Black transparent
Pcs/ctn	60 pcs/ctn



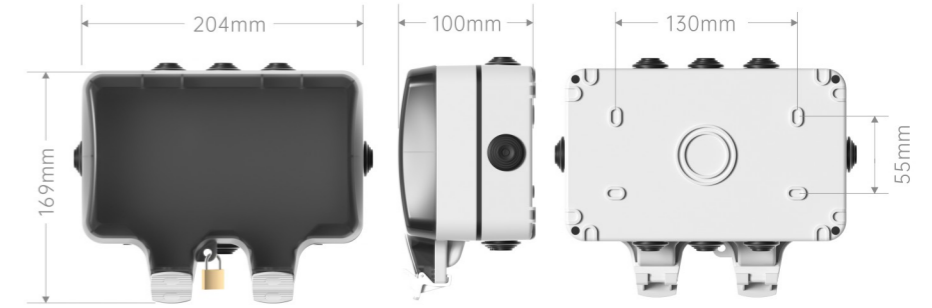
FW-3  
Circuit breaker

# OUTDOOR IP66 WATERPROOF BOX

Size drawing of 146 type

SPECIFIC:

Model	FW-4
Series	146 Outdoor waterproof
Material	ABS+PC/PC
Colour	Transparent / Black transparent
Pcs/ctn	30 pcs/ctn



FW-4  
double 13A switched socket

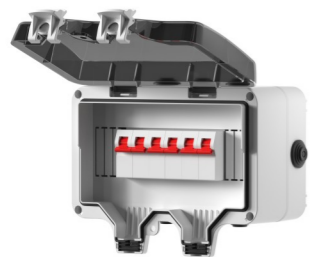
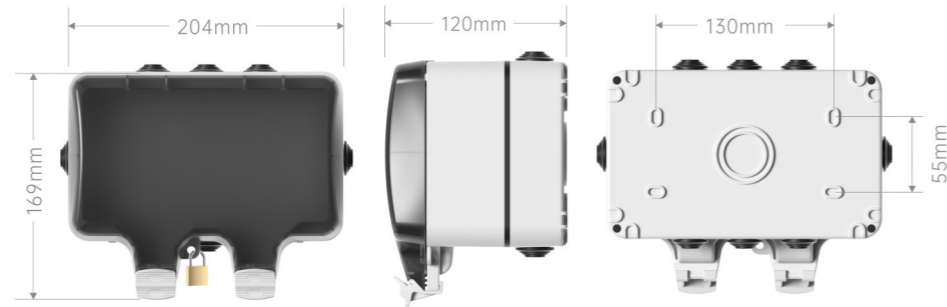


FW-4  
double 5pin MF switched socket

Dual 86 size diagram:

SPECIFIC:

Model	FW-3
Series	Dual outdoor waterproof box for circuit breaker
Material	ABS+PC/PC
Colour	Transparent / Black transparent
Pcs/ctn	30 pcs/ctn

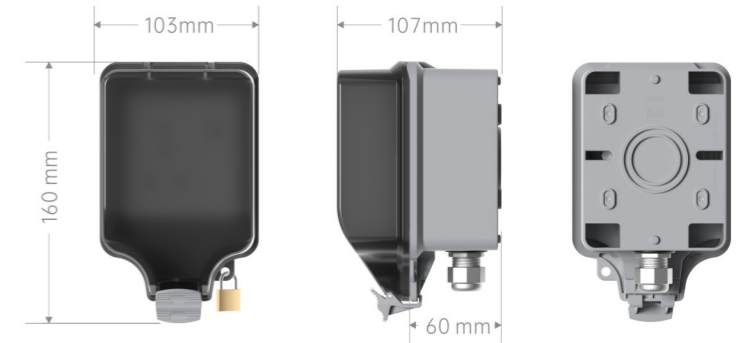


FW-3  
double Circuit breaker

Single 86 size diagram:

SPECIFIC:

Model	FW-X186-2
Series	single outdoor waterproof box
Material	PC
Colour	transparent black
Pcs/ctn	60 pcs/ctn



FW-X186-2  
3pin MF socket



FW-X186-2  
13A switched socket with neon



FW-X186-2  
5pin MF switched socket with neon



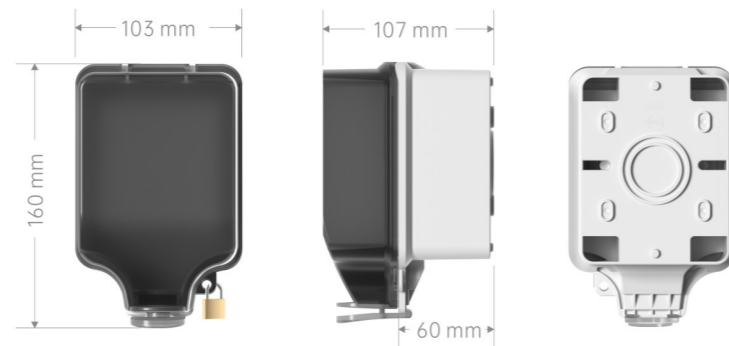
FW-X186-2  
EU socket

## IP66户外防水盒

Single 86 size diagram:

SPECIFIC:

Model	FW-X186
Series	Single 86 type outdoor waterproof box
Material	PC
Colour	Black transparent
Pcs/ctn	60 pcs/ctn



FW-X186  
3pin MF socket



FW-X186  
13A switched sock



FW-X186  
5pin MF switched socket



FW-X186  
Europen socket

Dual 86 size diagram:

SPECIFIC:

Model	FW-X286
Series	Dual type 86 outdoor waterproof box
Material	PC
Colour	Black transparent
Pcs/ctn	30 pcs/ctn



FW-X286  
1 gang+13A switched socket



FW-X286  
1 gang+5pin MF switched socket



FW-X286  
2 gang+Europen socket



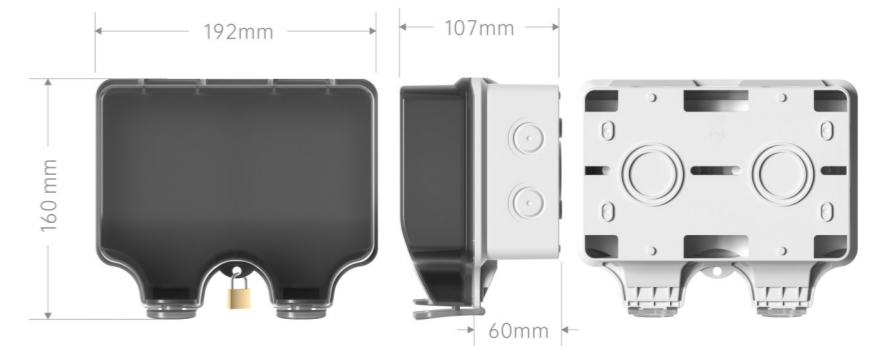
FW-X286  
double 13A socket

## IP66户外防水盒

Size drawing of 146 type

SPECIFIC:

Model	FW-X146
Series	146-type outdoor waterproof box
Material	PC
Colour	Black transparent
Pcs/ctn	60 pcs/ctn

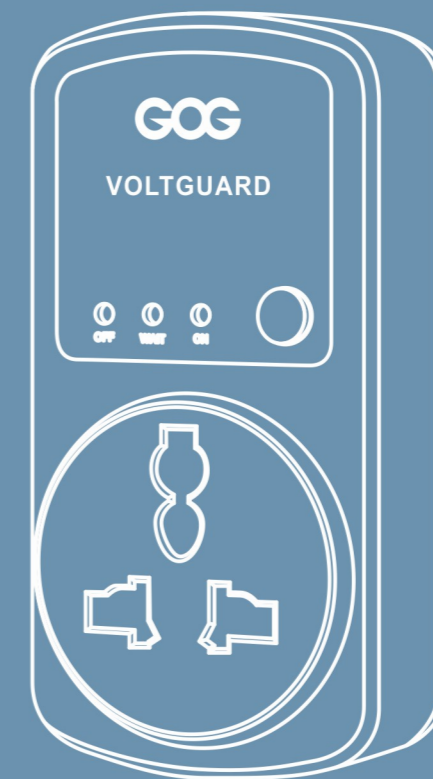


FW-X146  
double 13A switched socket



FW-X146  
double 5pin MF switched socket

# ELECTRICAL PRODUCT SERIES




GOGelectrical

# VOLTAGE PROTECTOR

ONE TYPE OF PROTECTIVE DEVICE THAT DESIGNED TO PREVENT VOLTAGE FLUCTUATIONS FROM DAMAGING ELECTRICAL EQUIPMENT



## SPECIFIC:

Series	voltage protector	<b>Protect against:</b> Over voltage Under voltage Surges/spikes Powerback surges	<b>Max current:</b> 7 amps	<b>Wait time:</b> User adjustment 3 minutes or 30 seconds	 <b>Voltage protector</b>
Material	PC				
Parameter	HIP:240V-280V LOP:130V-180V				

## PRODUCT FUNCTIONS

This product can protect your equipment by cutting off the power supply when the voltage falls below or exceeds acceptable levels, as both overvoltage and undervoltage can damage electronic components or electrical devices.

## FEATURES AND ADVANTAGES

Additional Information 90 Seconds delay  
 Over-voltage Disconnect (260V)  
 Over-Voltage Reconnect (255V)  
 Under-Voltage Disconnect (180V)  
 Under-Voltage Reconnect (185V)  
 Mains Spike Response  
 Time <10ns

# VOLTAGE PROTECTOR

## SPECIFIC:

Series	voltage protector
Material	PC
Parameter	HIP:240V-280V LOP:130V-180V



## SPECIFIC:

Series	voltage protector
Material	PC
Parameter	HIP:240V-280V LOP:130V-180V



### ● OFF

Slow flashing indicates undervoltage or overvoltage, fast flashing indicates that the voltage is back to normal and is counting down to turn on and off when the voltage is normal.

### ● WAIT

When the yellow light is on, the work is normal, the yellow light flashes as a fault.

### ● ON

The lamp lights up when the voltage is normal and goes out when the voltage is abnormal.

## APPLICATION

In home appliances, office equipment, industrial equipment and other fields, used to protect your home electrical equipment, such as your TV, refrigerator, etc.




# SENSOR LAMP

ONE TYPE OF AUXILIARY LIGHT FOR GUIDING PURPOSES



## SPECIFIC:

Series	Infrared human body induction footlight	Current and voltage:10A~250V
Colour	White/Gold/Gray/Black	
Material	PC/Glass	



## PRODUCT FUNCTIONS

With the light and bright, during the day when the strong light does not light, at night when someone enters the detection area automatically light up

**3M** Sensing Distance

**120°** Induction angle

 auto-sensing

## FEATURES AND ADVANTAGES

People come to automatically light, people walk automatically extinguish, no manual

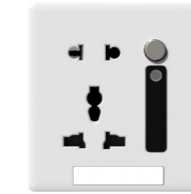
## APPLICATION

Hallways, passageways, bedrooms, etc.

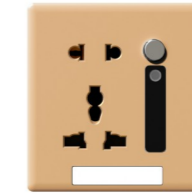
# ELECTRONIC PRODUCTS SERIES

## SPECIFIC:

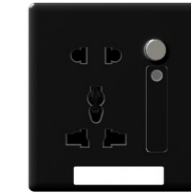
Series	5 Pin Multi Sensor Lamp
Colour	White/Gold/Gray/Black
Material	PC



K20-87-1



K20-87-2



K20-87-3



K20-87-4

## SPECIFIC:

Series	USB + Type-C
Colour	White
Material	PC



2 way USB + Type-C (20W)



3 way USB + Type-C (20W)



4 way USB + Type-C (20W)

## SPECIFIC:

Series	2 way USB + Type-C
Colour	White/Gold/Gray/Black
Material	PC/Glass



65W Pass the 3C certification



30W Pass the 3C certification



65W Pass the 3C certification



30W Pass the 3C certification

## SPECIFIC:

Model	C1-84
Series	Speed regulation: 500W
Colour	White
Material	PC



## SPECIFIC:

Model	K1-84
Series	Speed regulation: 500W
Colour	White
Material	PC



## ELECTRONIC PRODUCTS SERIES

### SPECIFIC:

Model	L1-70
Series	2 wire Mechanical card switch 20A
Colour	white
Material	PC



### SPECIFIC:

Model	L1-71
Series	3 wire card switch 40A
Colour	white
Material	PC



### SPECIFIC:

Model	L1-73/74 A1-73/74
Series	Key Card Switch
Colour	White
Material	PC



L1-73  
3 wire LF



L1-74  
3 wire HF 40A



A1-73  
4 wire LF 40A



A1-74  
4 wire HF 40A

### SPECIFIC:

Model	L1-41
Series	Two-wire sound and light control 60W
Colour	White
Material	PC



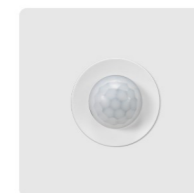
### SPECIFIC:

Model	A1-41
Series	Two-wire sound and light control 150w
Colour	White
Material	PC



### SPECIFIC:

Model	L1-61
Series	Two-wire human body sensor 60w
Colour	White
Material	PC



### SPECIFIC:

Model	A1-61
Series	Two-wire human body sensor 150w
Colour	White
Material	PC



## ELECTRONIC PRODUCTS SERIES

### SPECIFIC:

Series	Plug-in footlight
Colour	White/Gold/Gray Black
Material	PC



A1-126-1



A1-126-2



A1-126-3



A1-126-4

### SPECIFIC:

Series	Infrared human body induction footlight
Colour	White/Gold/Gray Black
Material	PC/Glass



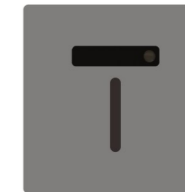
S10-87-1



S10-87-2



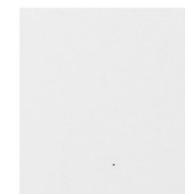
S10-87-3



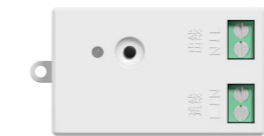
S10-87-4

### SPECIFIC:

Series	433 communication, random post, 1way switch
Colour	White/Gold/Gray Black
Material	PC

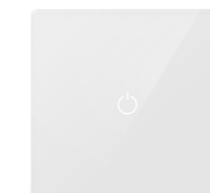


Series	433 communication switch
Colour	White
Material	PC

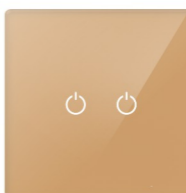


### SPECIFIC:

Model	S80
Colour	White/Gold/Gray Black
Material	tempered glass
Size	86*90mm



S80-1K  
1 gang smart switch



S80-2K  
2 gang smart switch



S80-3K  
3 gang smart switch




# SUPERIOR SENSING-FUNCTION TRACK SOCKET

ONE TYPE OF SOCKET THAT CAN BE ADDED AND REDUCED, MOVED AND REPOSITIONED AT WILL WITHIN THE CONFINES OF THE TRACK.



## SPECIFIC:

Item No	LED sensing-function type	Rated Voltage: 250V Rated Current: 32A Rated Power: 8000W Sandblasted aluminum alloy small anodized	 Track socket
Norm	40mm/50mm/60/80mm		
typology	Surface mounted/ concealed mounted		

## PRODUCT FUNCTIONS

1. LED sensing function track (waving/touching to turn on, waving/touching to turn off)
2. Normal track (without LED sensing function)
3. Track socket with the functions of waterproof, dustproof, Oil and grease resistant, etc.





## FEATURES AND ADVANTAGES

1. 8000W high power track (Can use more electrical appliances at the same time)
2. Multiple sockets can be used at the same time, and sockets with different functions can be replaced at any time.

## GREAT DESIGN IN DETAIL

Remove the adapter in the power-off state, can be inserted in the appropriate position to use convenient and flexible, want to move, not afraid of the power cord is not long enough.



-  Multiple security protection
-  Flexible displacement
-  High power load
-  Variety of processed

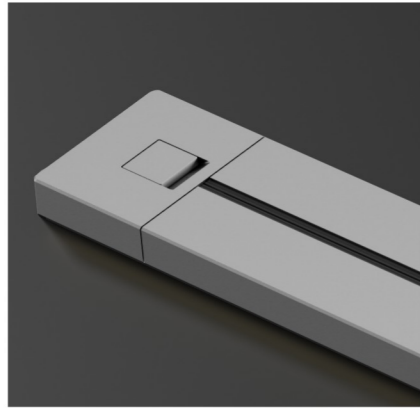
## APPLICATION

Living room, study, office, kitchen, etc.



## TRACK

### LED sensing-function type



#### Regular size

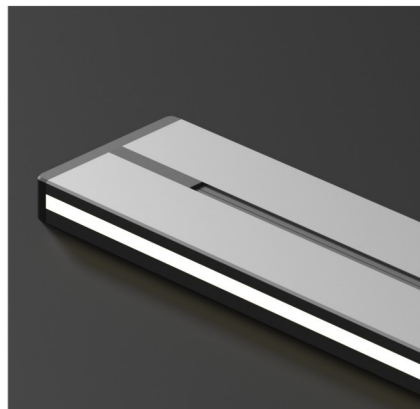


#### Customized size



1. 8000W high power track (to meet more electrical appliances at the same time)
2. LED ambient light adapter (optional with or without)

### LED sensing-function type



#### Regular size



#### Customized size



1. LED sensing function track (waving/touching to turn on, waving/touching to turn off)
2. 8000W high power track (to meet more electrical appliances at the same time)
3. LED ambient light adapter (optional with or without)

### Regular type



#### Regular size



#### Customized size



1. 8000W high power track (to meet more electrical appliances at the same time)
2. LED ambient light adapter (optional with or without)

## ADAPTER

White Grey Black



MF Socket



13A Socket



Thai 3 pin socket



American 3 Pin Socket



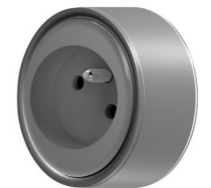
Italian Socket



Brazil Socket



Germany Socket



France Socket



USB+Type-C Socket



the Philippines Socket

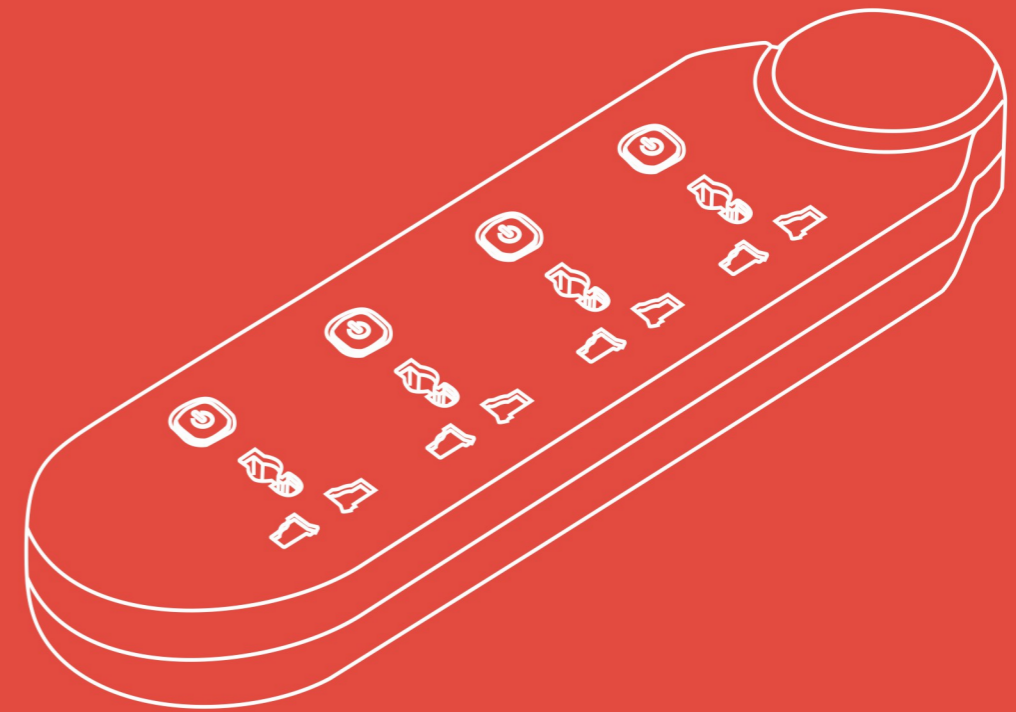


Australia Socket



India/South Africa Socket

# EXTENSION SOCKET SERIES



GOGelectrical



## EXTENSION SOCKET

**5000+**

Normal plugging  
and unplugging test

**750°C**

High quality flame  
retardant stainless steels

**33%**

33% thicker wire  
core to 1 mm

# EXTENSION SOCKET

ONE TYPE OF EXTENSION SOCKET FOR CONNECTING ELECTRICAL DEVICES AND POWER SUPPLY.



## SPECIFIC:

Item No	UNS-4K3U	Color:White Voltage:120 Volts Special Feature:Surge Protection, Mountable
2.0m	35 pcs/ctn	
3.0m	35 pcs/ctn	
5.0m	30 pcs/ctn	



## PRODUCT FUNCTIONS

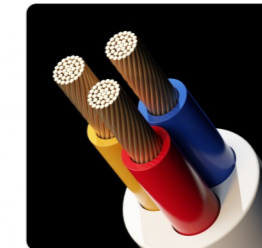
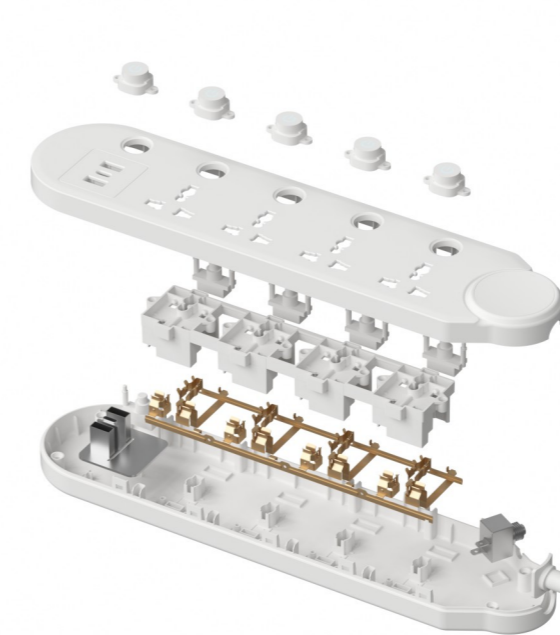
1. One-piece stamping molding High precision brass, very good conductivity, smoothly insert and pull the plug, lifetime reach to more than 10,000 times.
2. New type of integrated switch with indicator, stable and durable, lifetime reach to more than 10,000 times.
3. New flame retardant materials, heat-resistant temperature reaches the national "abnormal heat" test standards, 850 °C high temperature does not burn, -25 °C low-temperature use without cracking
4. USB socket charging intelligent shunt, matching any cell phone model.

## FEATURES AND ADVANTAGES

1. Products can be customized with various grades of configurations according to customer requirements.
2. Made of flexible raw materials, highly eco-friendly and odor-free, with a skin-friendly matte texture.

## GREAT DESIGN IN DETAIL

Overall high temperature flame retardantThe whole is made of flame-retardant PP material, which has passed the 750-degree burning wire test, so you can rest assured that it is safe to use.



Using 3 × 1mm oxygen free purple copper wire results in lower heat generation,Higher load power



Relying on the meshing of plastic insertsCombining technology to ensure that the plug is not loose. The durability of the socket is longer



>75N anti misoperation safety door protectionDesign, equivalent to a pressure of 7.5KGPrevent fingers or small objects from being inserted



The plastic shell is made of PP flame-retardant material,Burning at 750 °C without catching fire



Security protection door



Flame retardant



Copper wire



Mesh technology

## APPLICATION

Homes, offices, factories, shopping malls, hotels, etc





## MF STANDARD

1. Products can be customized with various grades of configurations according to customer requirements.
2. Made of flexible raw materials, highly eco-friendly and odor-free, with a skin-friendly matte texture.

## MF STANDARD

SPECIFIC:

Item No	UNS-1K3B
2.0m	50pcs/ctn
3.0m	45pcs/ctn
5.0m	40pcs/ctn



SPECIFIC:

Item No	UNS-1K4B
2.0m	45pcs/ctn
3.0m	40pcs/ctn
5.0m	35pcs/ctn



SPECIFIC:

Item No	UNS-1K5B
2.0m	40pcs/ctn
3.0m	40pcs/ctn
5.0m	32pcs/ctn



SPECIFIC:

Item No	UNS-1K3UC
2.0m	45pcs/ctn
3.0m	40pcs/ctn
5.0m	35pcs/ctn



SPECIFIC:

Item No	UNS-3K3B
2.0m	40pcs/ctn
3.0m	40pcs/ctn
5.0m	35pcs/ctn



SPECIFIC:

Item No	UNS-4K4B
2.0m	35pcs/ctn
3.0m	35pcs/ctn
5.0m	30pcs/ctn



SPECIFIC:

Item No	UNS-5K5B
2.0m	32pcs/ctn
3.0m	30pcs/ctn
5.0m	30pcs/ctn



SPECIFIC:

Item No	UNS-3K3U
2.0m	40pcs/ctn
3.0m	40pcs/ctn
5.0m	35pcs/ctn



SPECIFIC:

Item No	UNS-4K3U
2.0m	35pcs/ctn
3.0m	35pcs/ctn
5.0m	30pcs/ctn



SPECIFIC:

Item No	UNS-5K3U
2.0m	32pcs/ctn
3.0m	30pcs/ctn
5.0m	30pcs/ctn





## BRITISH STANDARD

1. Products can be customized with various grades of configurations according to customer requirements.
2. Made of flexible raw materials, highly eco-friendly and odor-free, with a skin-friendly matte texture.

## BRITISH STANDARD

SPECIFIC:

Item No	YS-1K3B
2.0m	50pcs/ctn
3.0m	45pcs/ctn
5.0m	40pcs/ctn



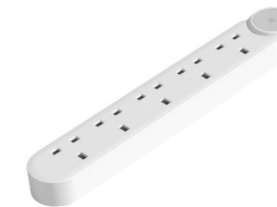
SPECIFIC:

Item No	YS-1K4B
2.0m	45pcs/ctn
3.0m	40pcs/ctn
5.0m	35pcs/ctn



SPECIFIC:

Item No	YS-1K5B
2.0m	40pcs/ctn
3.0m	40pcs/ctn
5.0m	32pcs/ctn



SPECIFIC:

Item No	YS-1K3UC
2.0m	45pcs/ctn
3.0m	40pcs/ctn
5.0m	35pcs/ctn



SPECIFIC:

Item No	YS-3K3B
2.0m	40pcs/ctn
3.0m	40pcs/ctn
5.0m	35pcs/ctn



SPECIFIC:

Item No	YS-4K4B
2.0m	35pcs/ctn
3.0m	35pcs/ctn
5.0m	30pcs/ctn



SPECIFIC:

Item No	YS-5K5B
2.0m	32pcs/ctn
3.0m	30pcs/ctn
5.0m	30pcs/ctn



SPECIFIC:

Item No	YS-3K3U
2.0m	40pcs/ctn
3.0m	40pcs/ctn
5.0m	35pcs/ctn



SPECIFIC:

Item No	YS-4K3U
2.0m	35pcs/ctn
3.0m	35pcs/ctn
5.0m	30pcs/ctn



SPECIFIC:

Item No	YS-5K3U
2.0m	32pcs/ctn
3.0m	30pcs/ctn
5.0m	30pcs/ctn



## GERMAN/ FRENCH STANDARD

SPECIFIC:

Item No	DES-113
2.0m	40pcs/ctn
3.0m	40pcs/ctn
5.0m	35pcs/ctn



SPECIFIC:

Item No	DES-114
2.0m	35pcs/ctn
3.0m	35pcs/ctn
5.0m	30pcs/ctn



SPECIFIC:

Item No	DES-115
2.0m	35pcs/ctn
3.0m	35pcs/ctn
5.0m	30pcs/ctn



SPECIFIC:

Item No	DES-113U24
2.0m	35pcs/ctn
3.0m	35pcs/ctn
5.0m	30pcs/ctn



## Flexible Angle Multiple Sockets



## ISSUED THE STANDARD

SPECIFIC:

Item No	FRS-113
2.0m	40pcs/ctn
3.0m	40pcs/ctn
5.0m	35pcs/ctn



SPECIFIC:

Item No	FRS-114
2.0m	35pcs/ctn
3.0m	35pcs/ctn
5.0m	30pcs/ctn



SPECIFIC:

Item No	FRS-115
2.0m	35pcs/ctn
3.0m	35pcs/ctn
5.0m	30pcs/ctn



SPECIFIC:

Item No	FRS-116
2.0m	35pcs/ctn
3.0m	35pcs/ctn
5.0m	30pcs/ctn



SPECIFIC:

Item No	FRS-113U24
2.0m	35pcs/ctn
3.0m	35pcs/ctn
5.0m	30pcs/ctn





## THAI STANDARD

1. Products can be customized with various grades of configurations according to customer requirements.
2. Made of flexible raw materials, highly eco-friendly and odor-free, with a skin-friendly matte texture.

## THAI STANDARD

SPECIFIC:

Item No	TAS-103
2.0m	50pcs/ctn
3.0m	45pcs/ctn
5.0m	40pcs/ctn



SPECIFIC:

Item No	TAS-104
2.0m	45pcs/ctn
3.0m	40pcs/ctn
5.0m	35pcs/ctn



SPECIFIC:

Item No	TAS-105
2.0m	40pcs/ctn
3.0m	40pcs/ctn
5.0m	32pcs/ctn



SPECIFIC:

Item No	TAS-403
2.0m	40pcs/ctn
3.0m	40pcs/ctn
5.0m	35pcs/ctn



SPECIFIC:

Item No	TAS-404
2.0m	35pcs/ctn
3.0m	35pcs/ctn
5.0m	30pcs/ctn



SPECIFIC:

Item No	TAS-405
2.0m	320pcs/ctn
3.0m	30pcs/ctn
5.0m	30pcs/ctn



SPECIFIC:

Item No	TAS-403U
2.0m	40pcs/ctn
3.0m	40pcs/ctn
5.0m	35pcs/ctn



SPECIFIC:

Item No	TAS-404U
2.0m	35pcs/ctn
3.0m	35pcs/ctn
5.0m	30pcs/ctn





## AMERICAN STANDARD

1. Products can be customized with various grades of configurations according to customer requirements.
2. Made of flexible raw materials, highly eco-friendly and odor-free, with a skin-friendly matte texture.

## AMERICAN STANDARD

SPECIFIC:

Item No	MS-1K401
1.0m	50pcs/ctn
3.0m	50pcs/ctn



SPECIFIC:

Item No	MS-1K601
1.0m	45pcs/ctn
3.0m	50pcs/ctn



SPECIFIC:

Item No	MS-1K602
1.0m	40pcs/ctn
3.0m	50pcs/ctn



SPECIFIC:

Item No	MS-1K604
1.0m	45pcs/ctn
3.0m	50pcs/ctn



SPECIFIC:

Item No	MS-1K603
1.0m	40pcs/ctn
3.0m	50pcs/ctn



## LAMP HOLDER/SWITCH BOX

SPECIFIC:

Model	DT02
Series	Hanging lamp holder
Material	Bakelite
Pcs/ctn	840 pcs/ctn



SPECIFIC:

Model	DT07
Series	Ceramic core copper ring lamp holder
Material	Ceramic core
Pcs/ctn	400



SPECIFIC:

Model	DT07
Series	Slanted lamp holder
Material	PP
Pcs/ctn	300 pcs/ctn



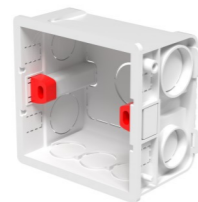
SPECIFIC:

Model	DT10
Series	Super surface mounted lamp holder(Bull style)
Material	high-power ceramics base, PC shell
Pcs/ctn	200 pcs/ctn



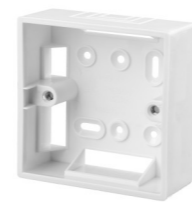
SPECIFIC:

Model	DH/C-004
Series	A Series Super Luxury junction box
Color	white/red/blue
Pcs/ctn	300 pcs/ctn



SPECIFIC:

Model	DH-012
Series	surface mounted Switch Box
Color	white
Pcs/ctn	300 pcs/ctn



## LAMP HOLDER/SWITCH BOX

SPECIFIC:

Model	CA-DH005
Series	A Series Super Deluxe Switch Box
Color	White/Red/Orchid
Pcs/ctn	200 pcs/ctn



SPECIFIC:

Model	CA-DH006
Series	A Series Super Deluxe Switch Box
Color	White/Red/Orchid
Pcs/ctn	150 pcs/ctn



SPECIFIC:

Model	CA-DH007
Series	A Series Super Deluxe Switch Box
Color	White/Red/Orchid
Pcs/ctn	100 pcs/ctn



SPECIFIC:

Model	CA-DH009
Series	118 fireproof Switch Box surface mounted
Color	white
Pcs/ctn	300 pcs/ctn



SPECIFIC:

Model	CA-DH010
Series	118 fireproof Switch Box surface mounted
Color	white
Pcs/ctn	240 pcs/ctn

